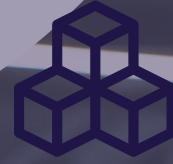


PRONTO xi

Platform Overview



Core Platform

Part of Foundation



Trademarks

Pronto Software, Pronto, Pronto Xi, the Pronto interrobang logo, the P interrobang logo, Pronto Woven, Pronto iQ and Pronto Cloud are all registered trademarks of Pronto Software Limited. All other marks are the property of their respective owners. Copyright © 2024 Pronto Software Limited (ABN 47001337248).

Disclaimer

This document contains statements related to our current and future developments that may constitute forward-looking statements. They are subject to changes and may be available in a Pronto Xi 780 service pack or future release of Pronto Xi. All diagrams, drawings, product screenshots and any other types of visualisations in this document, use demo or synthetic data created for display purposes only.

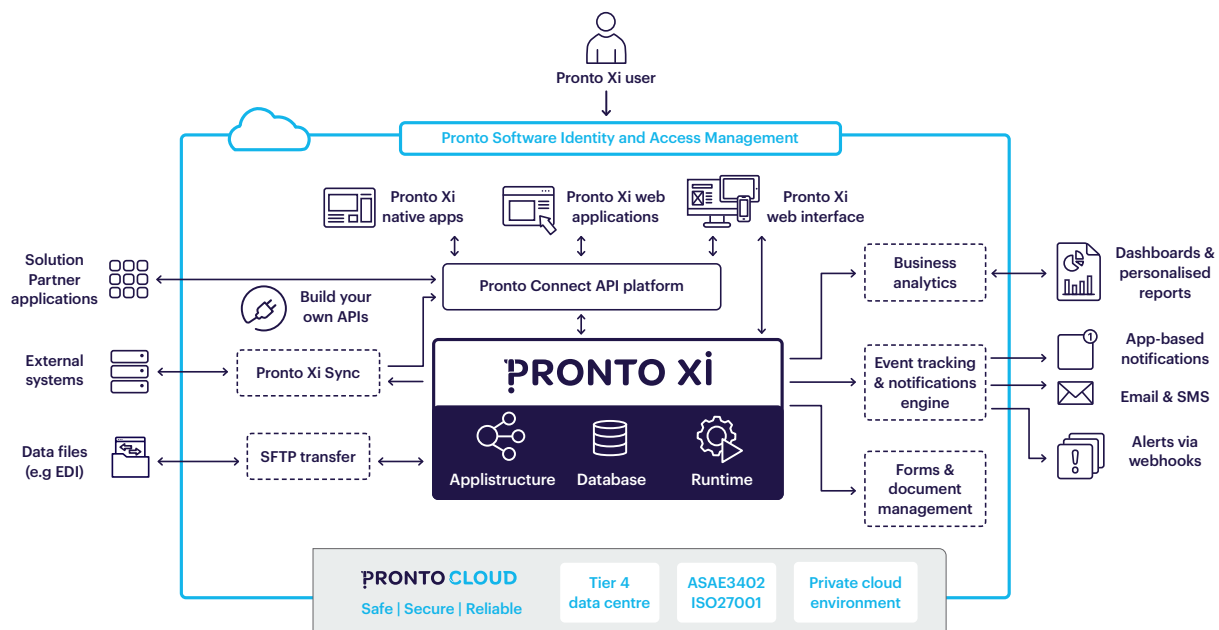
Contents

Core Platform	5
Runtime engine	5
Relational database support	5
Customisation	6
Application Services	8
Message services	8
Extensibility	9
Franchise inventory	9
POS redundancy (Offline POS)	9
Administration	9
System Administration	10
Use of codes	10
Data masking	10
Auditing	10
Data quality	11
Business Intelligence administration	11



Core Platform

Pronto Xi's core platform gives you a robust, enterprise-grade foundation for business success and is a powerful launching pad for enhanced performance



Overview of Pronto Xi technology

Runtime engine

Runtime “brokers” communication between Pronto Xi applications and the underlying IT platform. It provides a layer of abstraction from the operating system (OS) and relational database (RDBMS).

Key features include:

- technology abstraction, which decouples applications from their environment
- the ability to execute and manage the applications and general system environment
- high-availability and high-volume transaction processing

Relational database support

Pronto Xi provides powerful and flexible relational database support, delivering high-performance transactional processing for Pronto Xi applications and Business Intelligence.

The benefits of relational data support include increased data security, hands-free administration, high resiliency, and the ability to scale with your business.

Customisation

Enhance user productivity and reduce input errors using Screen Customiser, a dedicated tool tailored to address customisation requirements. The tool lets you customise Pronto Xi screens, enabling you to add, delete, or adjust fields, modify default values and implement data rules within fields. These capabilities are available for all company, group, or individual user settings.

Change screen prompts and fields

Move screen prompts and fields, edit text, or change font, colour and size to enhance the user experience.

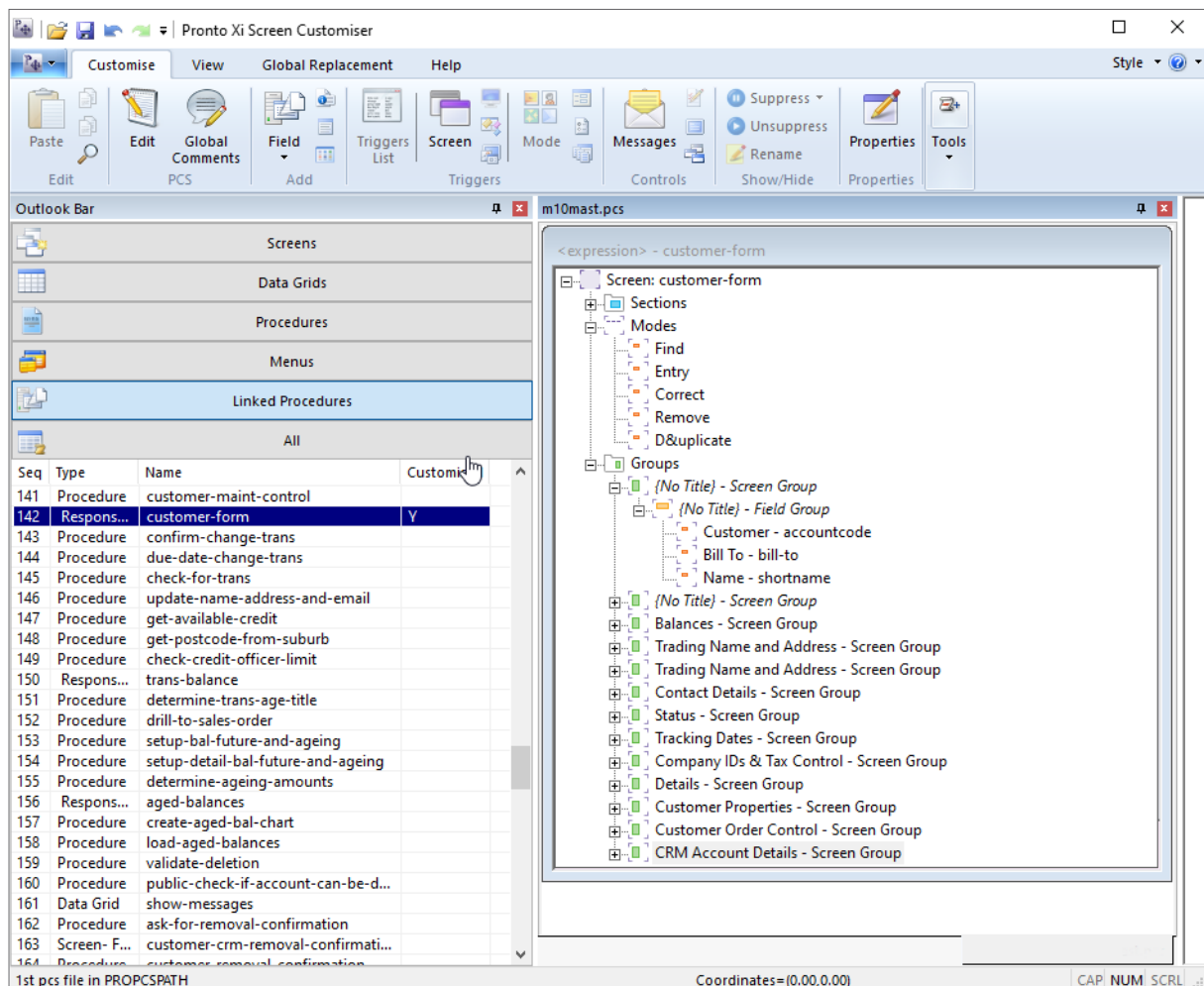
Change field defaults

Predefine field defaults for different operators or different types of operators. For example, set the default warehouse to “SYD” for all Sydney-based operators.

You can also hide fields, buttons and screen prompts, and suppress a field when it consistently holds a fixed value or remains unused.

Make fields “read-only”

Change an editable field to read-only so content cannot be altered.



Create linked procedures in Screen Customiser

**Mask sensitive field values**

Completely or partially mask any field with sensitive information.

Change help information

While Pronto Xi has built-in context-sensitive help, you can also include company-specific help information.

Add screen, field or button triggers

Launch a process separate from the screen's main function based on user activity. For example, determine the starting value of a field based on previously entered information or notify a manager if a sales order exceeds a specified dollar amount.

Create user-defined buttons

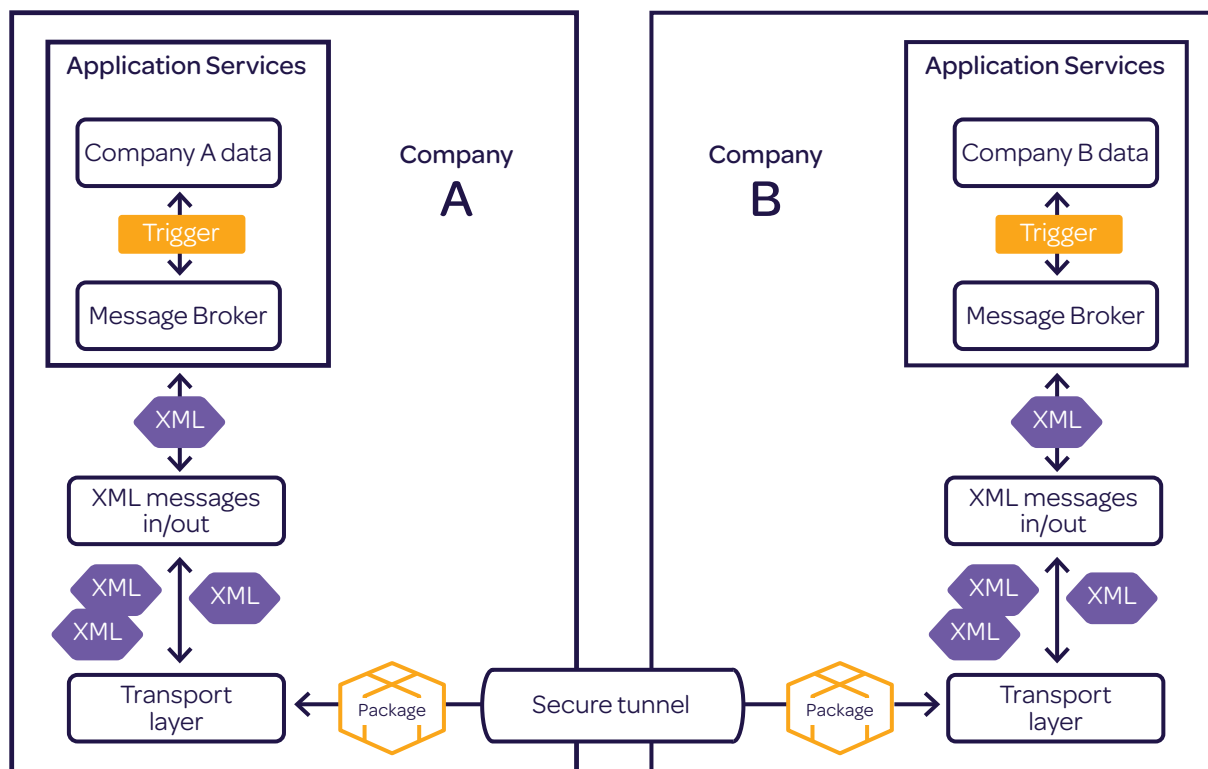
Create additional buttons to launch the processes you have defined.

Allow access to user-definable fields

Many of the master and transaction tables include a set of fields that you can use for supplementary data storage. Screen Customiser allows you to include these fields in regular input screens easily.

Add calculated or lookup fields to data grids and forms

Ensure the information you need is shown on your screen by including data from other tables or information that is calculated on the fly.



Overview of how Message Bus and Message Broker work

Application Services

Schedule programs without setting up scheduled tasks at the operating system level with the clever Application Services daemon. Running services are checked at one-minute intervals to determine whether any program is due for execution.

Set up Application Services to perform backups, run reports and update functions according to predefined values. And control vital functions, such as end-of-period processing, real-time data synchronisation across databases and streaming updates. Use message-based functions to communicate between distributed servers, databases and applications.

Run processes multiple times during the day or at any time. Every time a program is executed, it is logged for easy and direct verification.

Set up a single service to execute a program across multiple companies concurrently or consecutively. As all services operate independently, there is no risk that a job isn't executed because the execution of a program by another service has failed.

Message services

Pronto Xi's Message Bus facilitates data sharing between two disconnected Pronto Xi databases or companies. It's ideal for situations requiring reliable synchronisation between data sets on remote sites, such as franchise systems with a common inventory database or a point of sale (POS) system where redundancy is used.

Selectively share data between remote installations, employing a "publish and subscribe" methodology to ensure efficient message delivery and synchronisation.

At the heart of Message Bus is Message Broker, which manages message queues and processes message data. It identifies Pronto Xi datasets locally and remotely, and automatically handles data exchange between datasets on the same physical server.

Message Broker is independent of any communication protocols, so it functions consistently and reliably, regardless of medium. Message Broker also incorporates several measures to enhance security and data quality, including message validation routines that ensure what is sent is precisely what is received.

You can perform intelligent business tasks without user intervention, such as masking data in specific fields depending on the subscriber. Message Broker also contains a “refresh” function to bring remote datasets into line with a master dataset in case data corrupts or hardware fails.

Extensibility

Message Broker’s service-oriented architecture permits high levels of customisation without compromising stability. At each stage, you can replace standard business rules with custom ones that suit your needs.

Franchise inventory

Quality inventory information is a key requirement for franchise operations. With Message Broker, core inventory data is selectively shared with franchisees. Set up a staging area to hold back master data changes from broadcast until the desired time — for example, you can send price changes at a scheduled time ahead of a promotion.

POS redundancy (Offline POS)

POS systems using redundancy can leverage Message Bus’s advanced technology to keep remote servers synchronised with head office. Incremental changes are continually sent to remote servers so stores can trade with the most up-to-date information.

Administration

Take control of day-to-day administrator tasks — from performing backups and setting network protocols to defining roles and security settings — with complete ease.



System Administration

By utilising System Administration, you can define the usage of your chosen modules, ultimately influencing how Pronto Xi operates for you. While some processes are typically executed only once during set-up, you retain the flexibility to adjust configurations in the future. Moreover, additional System Administration features support continuous maintenance and housekeeping tasks.

The System Administration tool offers a range of functions for managing Pronto Xi, enabling you to oversee specific aspects of the Linux system without requiring knowledge of command lines or file formats; for example:

- backup/restore data
- user control
- terminal control
- printer control
- batch queue admin
- database control

Roles and securities

Control user-level access by a wide selection of roles and security profiles. System administrators can tailor user permissions to restrict access to individual companies, entire modules or specific functions within individual screens.

When new users are created, they are assigned one or multiple roles to define their access to Pronto Xi. To speed up this task, each role contains a list of authorised Pronto Xi modules and functions. Use wildcards to indicate all functions.

Where multiple companies exist, you can specify which companies or directories each user may access. You can also define the access each user has within each company.

Develop custom roles to define a job function according to your company's needs, or use Pronto Xi's "out-of-the-box" roles. You can also add user-defined functions to an existing role.

Use of codes

To prevent a code being used, Code Table Status Control allows you to set an active/inactive status for warehouse, territory, item group and sales representative code tables. Select a specific date to notify users of an upcoming status change.

Data masking

To complement Pronto Xi's tight but flexible functional security, System Administration deploys data masking to restrict access to specific application data. Data masking is also automatically applied to Business Intelligence reporting.

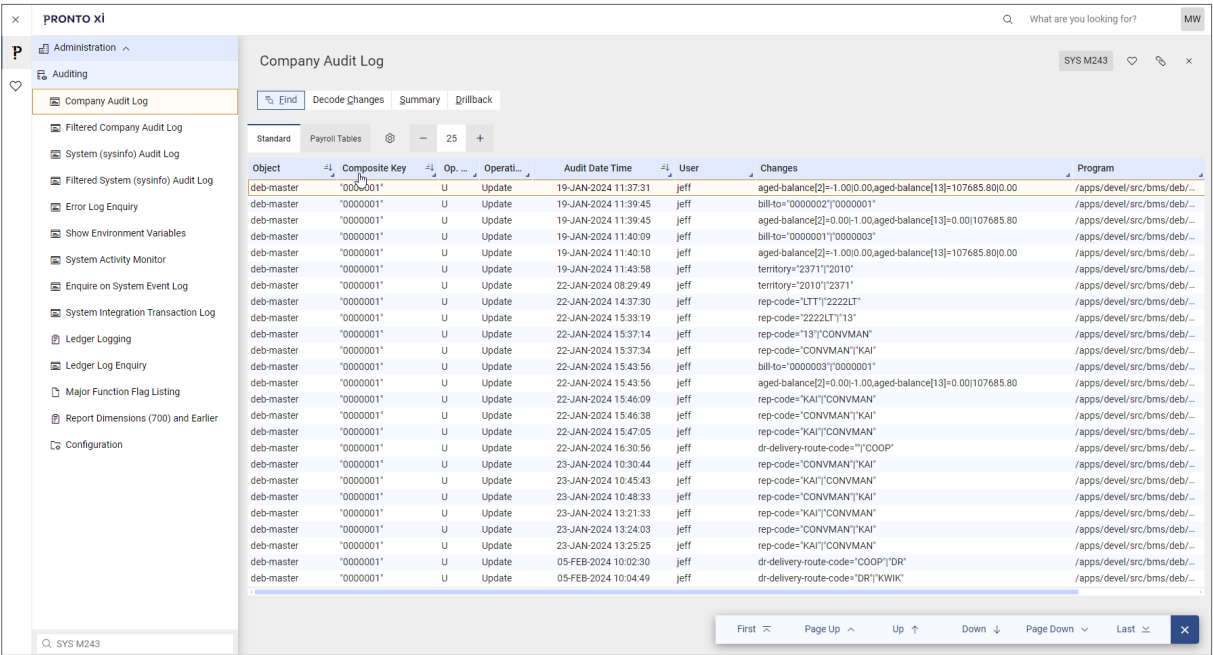
Auditing

Pronto Xi audits many activities within the system and monitors changes to master records and major function flags.

System Audit gives you total control over system changes, and creates reports that detail changes made to system settings, who made them and when. Other reports record changes to "static" master files and transaction processing.

Audit Management's strong audit capability records data changes (insert, delete and update) to key files. Files defined as requiring auditing are flagged at a dictionary or schema level.

The Audit Management menu allows authorised staff to configure the audit environment. You can determine the number of days included in each log file and the number of log files to retain. You can also define which users have security access to audit information for specific data tables.



Object	Composite Key	Op...	Operati...	Audit Date Time	User	Changes	Program
deb-master	"0000001"	U	Update	19-JAN-2024 11:37:31	jeff	aged-balance[2]=-1.00(0.00,aged-balance[13]=107685.80(0.00	/apps/devel/src/bms/deb/...
deb-master	"0000001"	U	Update	19-JAN-2024 11:39:45	jeff	bill-to="0000002"("0000001"	/apps/devel/src/bms/deb/...
deb-master	"0000001"	U	Update	19-JAN-2024 11:39:45	jeff	aged-balance[2]=0.00;-1.00,aged-balance[13]=0.00(107685.80	/apps/devel/src/bms/deb/...
deb-master	"0000001"	U	Update	19-JAN-2024 11:40:09	jeff	bill-to="0000001"("0000003"	/apps/devel/src/bms/deb/...
deb-master	"0000001"	U	Update	19-JAN-2024 11:40:10	jeff	aged-balance[2]=-1.00(0.00,aged-balance[13]=107685.80(0.00	/apps/devel/src/bms/deb/...
deb-master	"0000001"	U	Update	19-JAN-2024 11:43:58	jeff	territory="2371"("2010"	/apps/devel/src/bms/deb/...
deb-master	"0000001"	U	Update	22-JAN-2024 08:29:49	jeff	territory="2010"("2371"	/apps/devel/src/bms/deb/...
deb-master	"0000001"	U	Update	22-JAN-2024 14:37:30	jeff	rep-code="LTT"("2222LT"	/apps/devel/src/bms/deb/...
deb-master	"0000001"	U	Update	22-JAN-2024 15:33:19	jeff	rep-code="2222LT"("13"	/apps/devel/src/bms/deb/...
deb-master	"0000001"	U	Update	22-JAN-2024 15:37:14	jeff	rep-code="13"("CONVMAN"	/apps/devel/src/bms/deb/...
deb-master	"0000001"	U	Update	22-JAN-2024 15:37:34	jeff	rep-code="CONVMAN"("KAI"	/apps/devel/src/bms/deb/...
deb-master	"0000001"	U	Update	22-JAN-2024 15:43:56	jeff	bill-to="0000003"("0000001"	/apps/devel/src/bms/deb/...
deb-master	"0000001"	U	Update	22-JAN-2024 15:43:56	jeff	aged-balance[2]=0.00;-1.00,aged-balance[13]=0.00(107685.80	/apps/devel/src/bms/deb/...
deb-master	"0000001"	U	Update	22-JAN-2024 15:46:09	jeff	rep-code="KAI"("CONVMAN"	/apps/devel/src/bms/deb/...
deb-master	"0000001"	U	Update	22-JAN-2024 15:46:38	jeff	rep-code="CONVMAN"("KAI"	/apps/devel/src/bms/deb/...
deb-master	"0000001"	U	Update	22-JAN-2024 15:47:05	jeff	rep-code="KAI"("CONVMAN"	/apps/devel/src/bms/deb/...
deb-master	"0000001"	U	Update	22-JAN-2024 16:30:56	jeff	dr-delivery-route-code="COOP"	/apps/devel/src/bms/deb/...
deb-master	"0000001"	U	Update	23-JAN-2024 10:30:44	jeff	rep-code="CONVMAN"("KAI"	/apps/devel/src/bms/deb/...
deb-master	"0000001"	U	Update	23-JAN-2024 10:45:43	jeff	rep-code="KAI"("CONVMAN"	/apps/devel/src/bms/deb/...
deb-master	"0000001"	U	Update	23-JAN-2024 10:48:33	jeff	rep-code="CONVMAN"("KAI"	/apps/devel/src/bms/deb/...
deb-master	"0000001"	U	Update	23-JAN-2024 13:21:33	jeff	rep-code="KAI"("CONVMAN"	/apps/devel/src/bms/deb/...
deb-master	"0000001"	U	Update	23-JAN-2024 13:24:03	jeff	rep-code="CONVMAN"("KAI"	/apps/devel/src/bms/deb/...
deb-master	"0000001"	U	Update	23-JAN-2024 13:25:25	jeff	rep-code="KAI"("CONVMAN"	/apps/devel/src/bms/deb/...
deb-master	"0000001"	U	Update	05-FEB-2024 10:02:30	jeff	dr-delivery-route-code="COOP"("DR"	/apps/devel/src/bms/deb/...
deb-master	"0000001"	U	Update	05-FEB-2024 10:04:49	jeff	dr-delivery-route-code="DR"("KWIK"	/apps/devel/src/bms/deb/...

View a detailed audit log of all data changes

Data quality

Data Quality Management (DQM) increases system availability by reducing the downtime caused by administration processes. DQM has new data-checking programs that supersede the integrity routines in prior versions of Pronto Xi.

Data checks

By default, DQM only checks changed data, making the entire procedure more efficient. You can control the frequency of DQM processes via Application Services and define the types of checks to run.

Data status

The DQM Dashboard displays the status of DQM processes, as well as all identified issues.

Data clean-up

DQM groups issues by module and classifies them as Referential, Calculated or Orphan/Other.

Manage data issues as they arise by correcting master records or performing bulk replacements. DQM validates the corrected data and removes the issue from the DQM Dashboard.

Business Intelligence administration

Pronto Xi gives you complete flexibility to ensure your Business Intelligence suite provides the right information to the right people. Set access controls, user capabilities, and other reporting server functions, including:

- server set-up
- URL path maintenance
- data source configuration
- calendar and time dimension settings

About us

PRONTO

SOFTWARE

We are an Australian developer of award winning business management and analytics solutions. Pronto Xi, our Enterprise Resource Planning (ERP) software, integrates accounting, operational and mobile features in a single system – optimising business processes and unlocking actionable insights. That's why for more than 45 years, over 1,500 Australian and global organisations, across a wide range of industries, have trusted Pronto Xi to simplify their most complex challenges.

With headquarters and our Development Centre located in Melbourne, we have support offices and consultants based across Australia, as well as a global network of Resellers and Solution Partners. Specialised business units within Pronto Software have the expertise to assist you with pivotal technology – Digital Transformation with Pronto Woven, Cloud and Hosting services with Pronto Cloud and Business Intelligence solutions with Pronto iQ.

When you choose Pronto Software, you gain a team with deep industry experience, giving us the ability to understand your specific needs and build innovative solutions that drive business growth and revenue.

info@pronto.net
1300 PRONTO (1300 77 66 86)

 pronto.net

 Pronto-Software

 ProntoSoftware