

PRONTO xi

Platform Overview



Developer tools

Part of Foundation



Trademarks

Pronto Software, Pronto, Pronto Xi, the Pronto interrobang logo, the P interrobang logo, Pronto Woven, Pronto iQ and Pronto Cloud are all registered trademarks of Pronto Software Limited. All other marks are the property of their respective owners. Copyright © 2024 Pronto Software Limited (ABN 47001337248).

Disclaimer

This document contains statements related to our current and future developments that may constitute forward-looking statements. They are subject to changes and may be available in a Pronto Xi 780 service pack or future release of Pronto Xi. All diagrams, drawings, product screenshots and any other types of visualisations in this document, use demo or synthetic data created for display purposes only.

Contents

Developer tools	5
Rapid Application Development (RAD)	5
Software development kit	6
Real-time trace	6



Developer tools

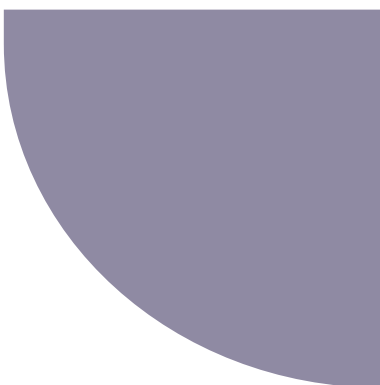
Implement more advanced customisation to the codebase using our tools

Rapid Application Development (RAD)

Pronto Software's Rapid Application Development (RAD) is a fully integrated, fourth-generation language facility that enables developers to extend or generate Pronto Xi applications — from simple to complex — with minimum time and effort.

RAD's key features include:

- data dictionary (database) generation and maintenance
- **4GL** — the fourth-generation language used in most Pronto Xi applications
- **SQL** — a query language facility for general reports and ad-hoc user queries
- **LST** — the default report generator used with SQL
- **RPT** — an alternative to LST for more complex reports
- screen-based application generation and maintenance routines
- interactive program debugging facilities



Software development kit

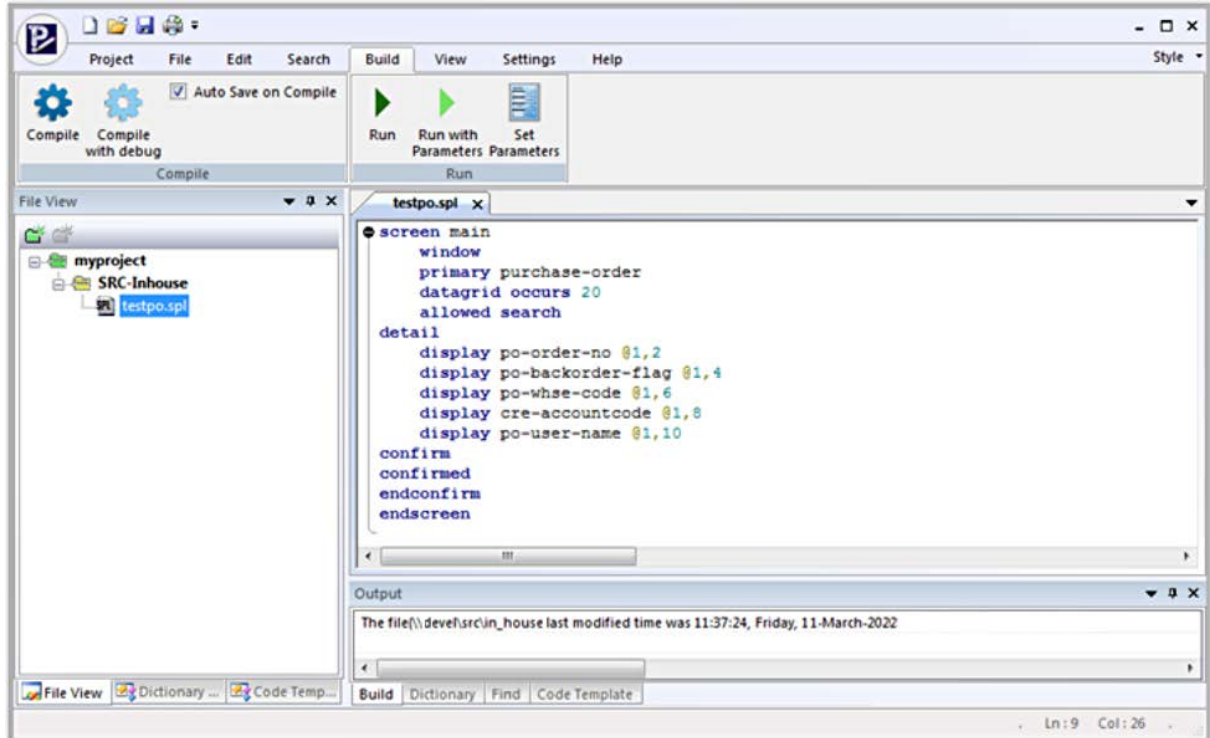
The Software Development Kit (SDK) is a resource centre for Pronto Xi developers and can be used in conjunction with RAD. It includes documentation, code samples, tips, tools and utilities — all collected into a central repository that continually evolves and grows over time as our community requires new programmatic functionality.

The SDK contains detailed technical information covering:

- Pronto Xi Object ActiveX control
- component libraries comprising both core and publicly exportable procedures
- API calls
- program calling methods
- suppressed data entry fields
- dictionary objects and fields
- code samples

Real-time trace

Real-Time Trace Control is a diagnostics utility that tracks, stores and reports the activity of Pronto Xi functions. Used by developers and support teams, this function traces input/output (disk reads/writes), procedures and the environment under which a program was executed. Use RAD to test or troubleshoot custom code changes.



Build and develop extensions to Pronto Xi



About us

PRONTO

SOFTWARE

We are an Australian developer of award winning business management and analytics solutions. Pronto Xi, our Enterprise Resource Planning (ERP) software, integrates accounting, operational and mobile features in a single system – optimising business processes and unlocking actionable insights. That's why for more than 45 years, over 1,500 Australian and global organisations, across a wide range of industries, have trusted Pronto Xi to simplify their most complex challenges.

With headquarters and our Development Centre located in Melbourne, we have support offices and consultants based across Australia, as well as a global network of Resellers and Solution Partners. Specialised business units within Pronto Software have the expertise to assist you with pivotal technology – Digital Transformation with Pronto Woven, Cloud and Hosting services with Pronto Cloud and Business Intelligence solutions with Pronto iQ.

When you choose Pronto Software, you gain a team with deep industry experience, giving us the ability to understand your specific needs and build innovative solutions that drive business growth and revenue.

info@pronto.net
1300 PRONTO (1300 77 66 86)

 pronto.net

 Pronto-Software

 ProntoSoftware