

PRONTO xi

Platform Overview

A man with a beard and glasses, wearing a light blue shirt, and a woman with dark hair in a ponytail, wearing a yellow shirt, are both smiling and looking at a tablet held by the woman. The background is a blurred office setting.

Web interface

Part of Foundation

Trademarks

Pronto Software, Pronto, Pronto Xi, the Pronto interrobang logo, the P interrobang logo, Pronto Woven, Pronto iQ and Pronto Cloud are all registered trademarks of Pronto Software Limited. All other marks are the property of their respective owners. Copyright © 2024 Pronto Software Limited (ABN 47001337248).

Disclaimer

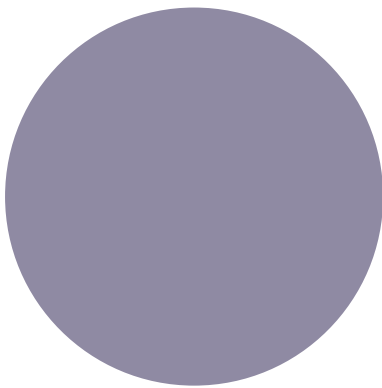
This document contains statements related to our current and future developments that may constitute forward-looking statements. They are subject to changes and may be available in a Pronto Xi 780 service pack or future release of Pronto Xi. All diagrams, drawings, product screenshots and any other types of visualisations in this document, use demo or synthetic data created for display purposes only.

Contents

Web interface	4
User experience	4
Usability	4
Icon support	4
Mobile access	5
Integrated back pane	5
Data grids	6
Links	6
Field-level validation	6
Security	6
Workspaces	7
Search	7

Web interface

A contemporary user interface that functions seamlessly across various platforms



Our user experience (UX) design strategy streamlines processes and boosts productivity. By leveraging contemporary web technologies, the web interface offers a fast and responsive work environment that remains accessible regardless of location or device.

User experience

We've updated the web client to give users more control over their experience. Now you can define which information is displayed, hide columns in data grids, pin relevant screen sections, and prioritise the most important sections.

Usability

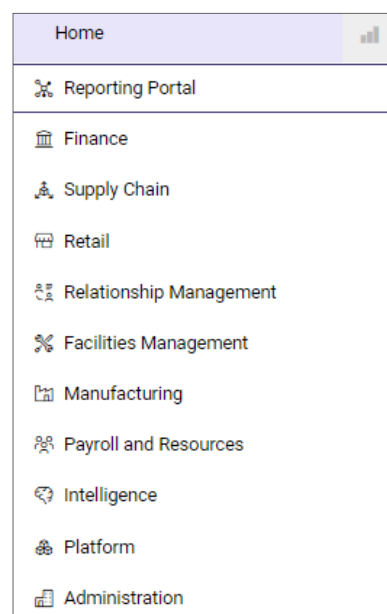
Modern and simple, the web interface makes navigating screens and menus, entering and viewing data, running reports and configuring user preferences extremely straightforward.

The interface caters for various data-entry methods, whether you're using a keyboard and mouse or a touchscreen mobile device.

In addition, Pronto Xi modules have a consistent format and function, making it quick and easy to learn new modules.

Icon support

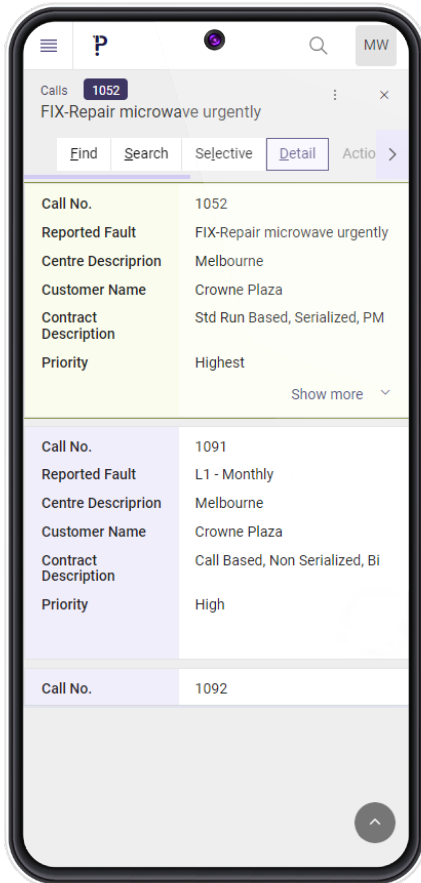
The web client supports a standard list of icons to improve usability, enhance the user experience and make the system more accessible to a broader range of users.



A view of the Pronto Xi menu

Mobile access

Accessible from a mobile device browser and supporting varied screen sizes, Pronto Xi makes it easy to access your business data when you are out of the office or on the road. View Workspaces reports, search Pronto Xi data, update sales orders, view customer relationship management (CRM) information, and much more.



Easily view data grids on smaller screens, like mobile phones

Integrated back pane

An integrated back pane delivers business system information to users within your organisation directly from the web interface.

In addition, it allows you to easily access intranets, external websites, corporate noticeboards, executive information systems, interactive workflow diagrams, reports, business dashboards or customised web pages.

Get the most out of Pronto Xi with these enhanced features



Full Pronto Xi access within a web browser



Elegant and intuitive to navigate



Supports personalisation and shortcuts



Increased user productivity



Quick to learn and easy to use



Available on a range of devices



Secure connection between web interface and server



WebSocket technology delivers real-time field-level validation



HTML5 and CSS3



Latest web UX methodologies

Data grids

Data grids allow you to view Pronto Xi data in a table format. Filter, sort and highlight data according to each user's preferences, and export to a spreadsheet (such as Excel or Google Sheets) or an XML report.

Control data entry by setting personal field defaults. For example, it ensures users create a new customer account using a specific customer type. The personal field defaults enable screens to suggest field values appropriate for the user's role or department.

Data grids also auto-scale to maximise the real estate of your display, ensuring you have the best view of the information you need.

Links

Quick Links lets you attach any file, website or network location to the Pronto Xi database. This means you can associate images, documents, spreadsheets, PDFs, movies or web pages with any stock item, customer, supplier, sales order, purchase order line or any other element within Pronto Xi.

Directly open links from the Pronto Xi screen using a toolbar button, streamlining routine tasks.

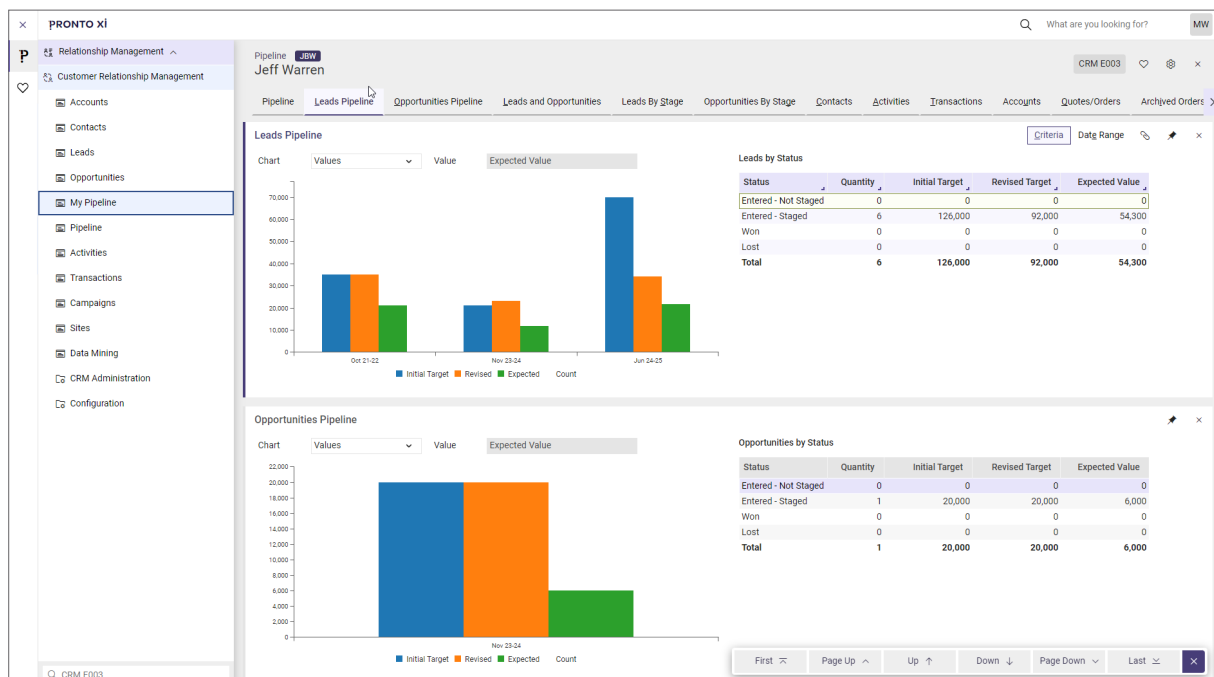
Field-level validation

The latest WebSocket technology delivers fast user performance and real-time, field-level data-entry validation, helping you improve productivity and efficiency.

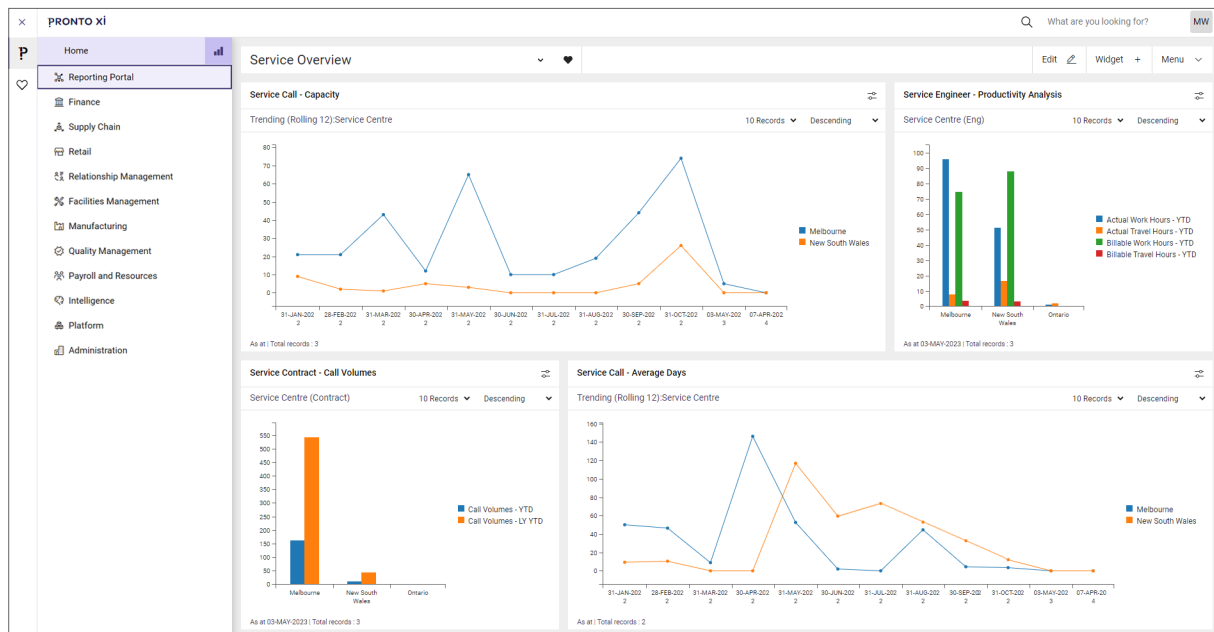
Validation happens at a field level as data entry occurs, not at the end once the form is submitted. This avoids user frustration due to lag time and data re-entry and ensures business process rules are followed during a transaction.

Security

Local Agent is a Windows application that supports a secure web interface and restricted access to an end user's computer for workflows that benefit from increased security, for example, the integration with locally installed programs or communicating with a locally attached hardware peripheral.



An example of the Pronto Xi web interface



Display interactive real-time data with Workspaces

Workspaces

Workspaces is an interactive, drag-and-drop canvas that displays relevant real-time information to staff members. Workspaces facilitates decision-making and priority-setting, enhancing collaboration across your organisation.

Choose from more than 80 key performance indicators (KPIs) and other widgets, and see how you perform against those KPIs in a single click. Further personalise the user experience with a variety of data options, including:

- selecting from a variety of chart types
- viewing trends over a period of time
- sorting, filtering and more

Workspaces is an alternative option to Pronto Xi's right-hand pane.

Search

Enterprise Search lets users quickly find frequently used data or menu functions across modules.

Search all available modules or select the ones most relevant to you. Each search result presents a range of options, so you can easily find the information you need.

For example, searching for a stock item code gives you the option to:

- maintain or enquire about the item
- do a stock adjustment
- do a quality assurance (QA) release

You can also define the default actions for various users.

About us

PRONTO

SOFTWARE

We are an Australian developer of award winning business management and analytics solutions. Pronto Xi, our Enterprise Resource Planning (ERP) software, integrates accounting, operational and mobile features in a single system – optimising business processes and unlocking actionable insights. That's why for more than 45 years, over 1,500 Australian and global organisations, across a wide range of industries, have trusted Pronto Xi to simplify their most complex challenges.

With headquarters and our Development Centre located in Melbourne, we have support offices and consultants based across Australia, as well as a global network of Resellers and Solution Partners. Specialised business units within Pronto Software have the expertise to assist you with pivotal technology – Digital Transformation with Pronto Woven, Cloud and Hosting services with Pronto Cloud and Business Intelligence solutions with Pronto iQ.

When you choose Pronto Software, you gain a team with deep industry experience, giving us the ability to understand your specific needs and build innovative solutions that drive business growth and revenue.

info@pronto.net
1300 PRONTO (1300 77 66 86)

 pronto.net

 Pronto-Software

 ProntoSoftware