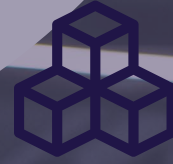


PRONTO xi

Platform Overview



Foundation

A platform to build on

Trademarks

Pronto Software, Pronto, Pronto Xi, the Pronto interrobang logo, the P interrobang logo, Pronto Woven, Pronto iQ and Pronto Cloud are all registered trademarks of Pronto Software Limited. All other marks are the property of their respective owners. Copyright © 2024 Pronto Software Limited (ABN 47001337248).

Disclaimer

This document contains statements related to our current and future developments that may constitute forward-looking statements. They are subject to changes and may be available in a Pronto Xi 780 service pack or future release of Pronto Xi. All diagrams, drawings, product screenshots and any other types of visualisations in this document, use demo or synthetic data created for display purposes only.

Contents

Technology	4	Enterprise security	18
Core platform	4	Security standards	19
Web interface	5	Application security	19
Enterprise security	5	Infrastructure security	19
Forms management	5	Multi-factor authentication	19
Developer tools	5	Single sign-on	19
API integration platform	5	Supported applications	19
New Technology Stack	5		
Core Platform	7	Forms management	20
Runtime engine	7	TrueForm Neo	20
Relational database support	7		
Customisation	8	Tasks and alerts	22
Application Services	10	Alerts	22
Message services	10	Tasks	22
Extensibility	11	Data	23
Franchise inventory	11	Notifications	23
POS redundancy			
(Offline POS)	11	Developer tools	24
Administration	11	Rapid Application Development (RAD)	24
System Administration	12	Software development kit	25
Use of codes	12	Real-time trace	25
Data masking	12		
Auditing	12	API Integration Platform	26
Data quality	13	APIs	27
Business Intelligence administration	13	Web services architecture	27
		Technical capabilities	27
Web interface	14	Pronto Xi Sync	28
User experience	14	Pronto Woven	28
Usability	14		
Icon support	14	Deployment	29
Mobile access	15	Pronto Cloud	29
Integrated back pane	15	Cloud ERP	30
Data grids	16	Data security	30
Links	16	Disaster recovery	30
Field-level validation	16		
Security	16		
Workspaces	17		
Search	17		

Technology

Build the foundation for your future

Pronto Xi's continuous technological innovation empowers you to adapt to a rapidly evolving business landscape proactively. Its design and architecture are carefully crafted to support scalability and diverse business needs from the ground up.

All applications within Pronto Xi are developed on its core platform. Leveraging applistructure design and Pronto Connect APIs, you can tailor or expand Pronto Xi's capabilities to suit specific business processes.

Pronto Xi offers versatile access through a web browser on desktops, laptops, or tablets. By utilising cloud-based Enterprise Resource Planning (ERP) software, your staff can conveniently access Pronto Xi modules from anywhere, using various devices. Furthermore, you can leverage the cost-effectiveness, rapid deployment and seamless maintenance of cloud services.

Core platform

Pronto Xi's core platform supports a modular architecture designed to evolve as applications grow and expand. Forming the core of the platform are runtime, relational database, proprietary fourth-generation programming language (4GL) and web interface functions.

Recognising the unique nature of your business, Pronto Xi is customisable — its applistructure solution means software modules align precisely with your individual requirements. The software adjusts to accommodate your business needs and processes for increased adaptability and flexibility.

Web interface

By leveraging modern web technologies and based on thorough user research, Pronto Xi's web interface liberates you from the confines of your office desk. The innovative interface enables you to conduct transactions, generate reports and access any Pronto Xi module from any location without needing installation.

Tailored for tablet devices, Pronto Xi's web interface allows you to manage business operations seamlessly using just a tablet and web browser.

Enterprise security

Due to the rising adoption of mobile and cloud technologies, coupled with legislative alterations, the significance of IT security has reached unprecedented levels. Pronto Xi integrates various technologies and mechanisms to safeguard your business, ensuring enterprise-grade security consistently.

Forms management

Effortlessly create and personalise customer-facing and business documents with TrueForm Neo. The tool handles various documents such as sales orders, invoices, purchase orders, pay slips, picking slips and more. With an integrated "what you see is what you get" (WYSIWYG) designer, you can tailor the output to suit your business. Moreover, you can conveniently print or email documents directly from the platform, streamlining the document management process.

Developer tools

To customise your experience, development tools, such as Rapid Application Development (RAD) and a Software Development Kit (SDK), are available and utilised by Pronto Software's internal development and professional services teams.

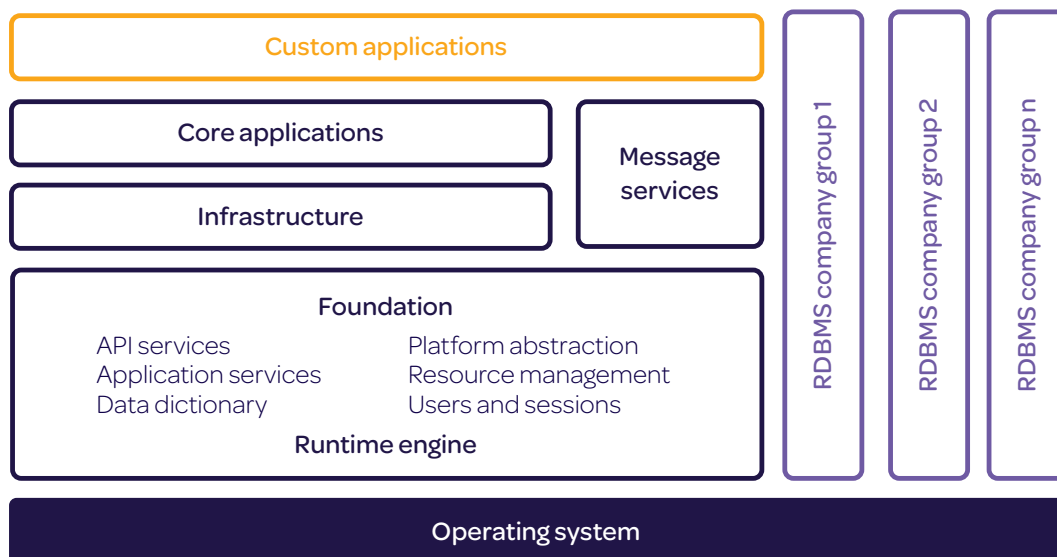
Furthermore, Pronto Xi is consistently being optimised so it remains compatible with the most recent versions of supported operating systems, databases, web browsers and business applications.

API integration platform

Enhance the capabilities of Pronto Xi by integrating it with your existing systems and complementary solutions through Pronto Connect. Pronto Xi offers a robust and adaptable API framework and development platform, enabling seamless, secure and real-time data exchange across your systems.

New Technology Stack

The modernisation of Pronto Xi through a new technology stack enhances its efficiency and scalability as a cloud-based ERP platform. The upgrade strengthens Pronto Xi's eXtensible Infrastructure (Xi) concept, bringing the products in line with market demands. Utilising cloud infrastructure augments scalability and resilience, and boosts integration, deployment and maintenance capabilities.

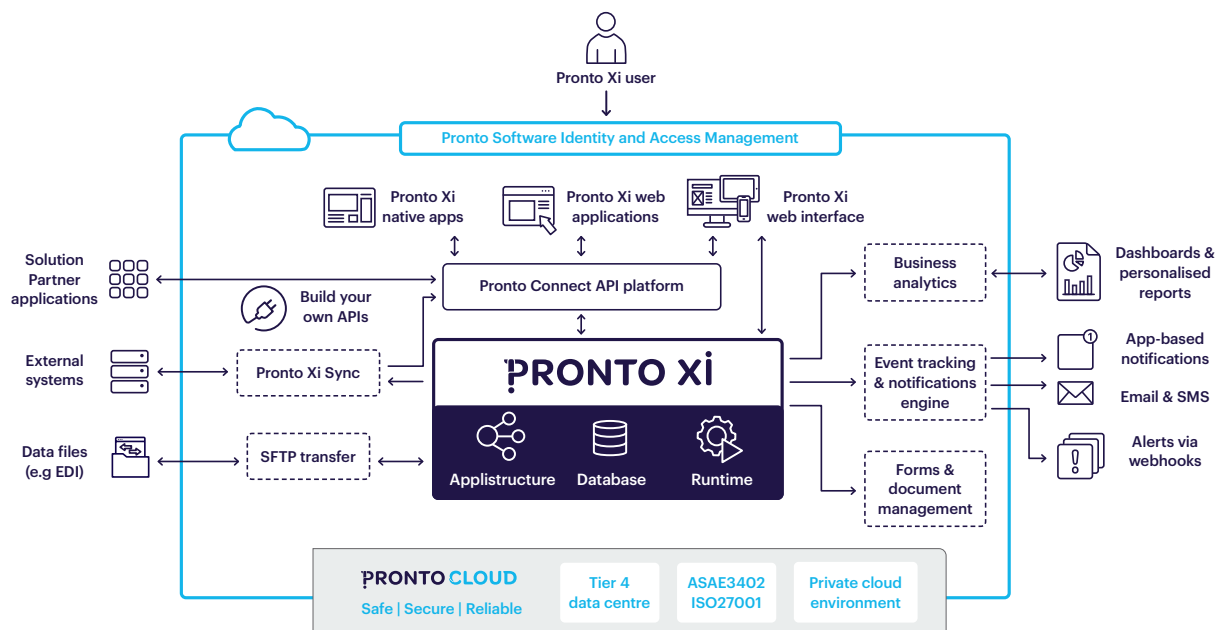


Overview of Runtime architecture



Core Platform

Pronto Xi's core platform gives you a robust, enterprise-grade foundation for business success and is a powerful launching pad for enhanced performance



Overview of Pronto Xi technology

Runtime engine

Runtime “brokers” communication between Pronto Xi applications and the underlying IT platform. It provides a layer of abstraction from the operating system (OS) and relational database (RDBMS).

Key features include:

- technology abstraction, which decouples applications from their environment
- the ability to execute and manage the applications and general system environment
- high-availability and high-volume transaction processing

Relational database support

Pronto Xi provides powerful and flexible relational database support, delivering high-performance transactional processing for Pronto Xi applications and Business Intelligence.

The benefits of relational data support include increased data security, hands-free administration, high resiliency, and the ability to scale with your business.

Customisation

Enhance user productivity and reduce input errors using Screen Customiser, a dedicated tool tailored to address customisation requirements. The tool lets you customise Pronto Xi screens, enabling you to add, delete, or adjust fields, modify default values and implement data rules within fields. These capabilities are available for all company, group, or individual user settings.

Change screen prompts and fields

Move screen prompts and fields, edit text, or change font, colour and size to enhance the user experience.

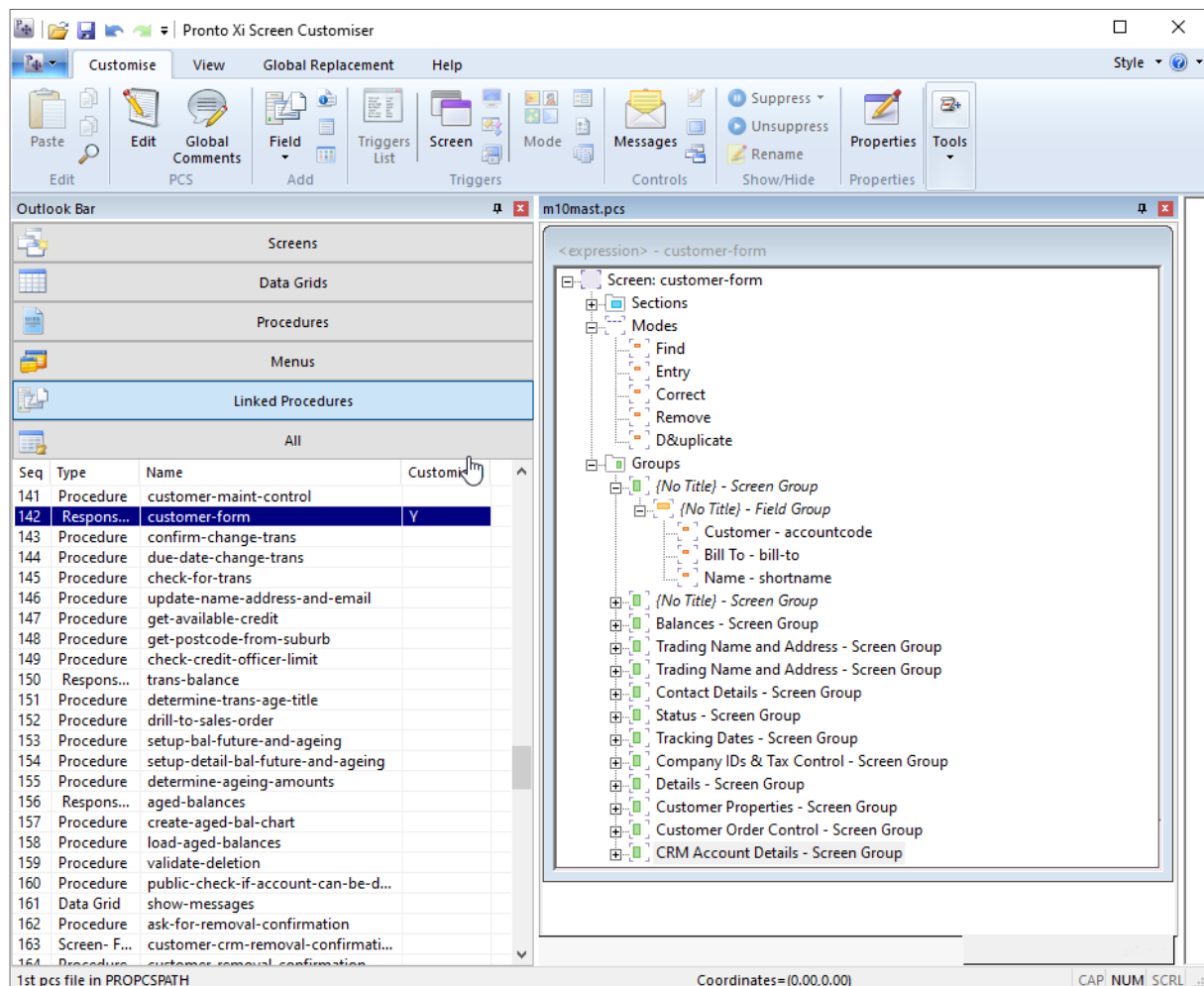
Change field defaults

Predefine field defaults for different operators or different types of operators. For example, set the default warehouse to “SYD” for all Sydney-based operators.

You can also hide fields, buttons and screen prompts, and suppress a field when it consistently holds a fixed value or remains unused.

Make fields “read-only”

Change an editable field to read-only so content cannot be altered.



Create linked procedures in Screen Customiser

**Mask sensitive field values**

Completely or partially mask any field with sensitive information.

Change help information

While Pronto Xi has built-in context-sensitive help, you can also include company-specific help information.

Add screen, field or button triggers

Launch a process separate from the screen's main function based on user activity. For example, determine the starting value of a field based on previously entered information or notify a manager if a sales order exceeds a specified dollar amount.

Create user-defined buttons

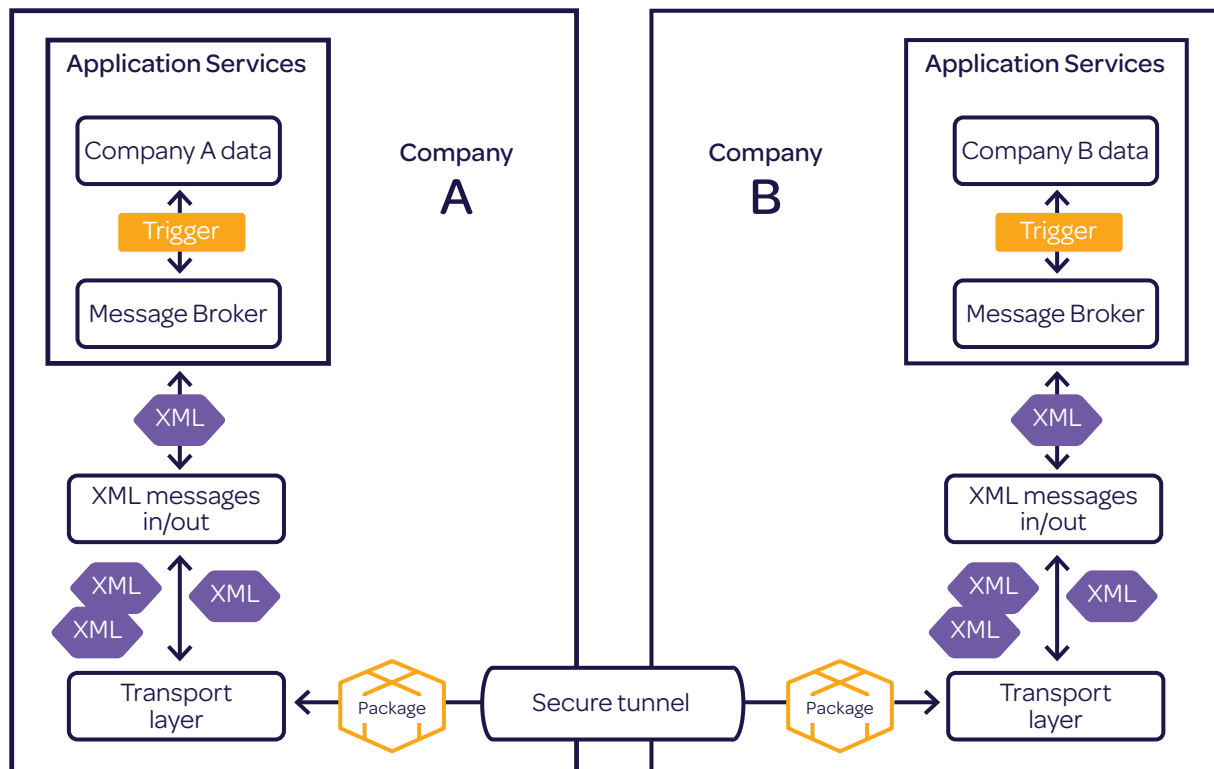
Create additional buttons to launch the processes you have defined.

Allow access to user-definable fields

Many of the master and transaction tables include a set of fields that you can use for supplementary data storage. Screen Customiser allows you to include these fields in regular input screens easily.

Add calculated or lookup fields to data grids and forms

Ensure the information you need is shown on your screen by including data from other tables or information that is calculated on the fly.



Overview of how Message Bus and Message Broker work

Application Services

Schedule programs without setting up scheduled tasks at the operating system level with the clever Application Services daemon. Running services are checked at one-minute intervals to determine whether any program is due for execution.

Set up Application Services to perform backups, run reports and update functions according to predefined values. And control vital functions, such as end-of-period processing, real-time data synchronisation across databases and streaming updates. Use message-based functions to communicate between distributed servers, databases and applications.

Run processes multiple times during the day or at any time. Every time a program is executed, it is logged for easy and direct verification.

Set up a single service to execute a program across multiple companies concurrently or consecutively. As all services operate independently, there is no risk that a job isn't executed because the execution of a program by another service has failed.

Message services

Pronto Xi's Message Bus facilitates data sharing between two disconnected Pronto Xi databases or companies. It's ideal for situations requiring reliable synchronisation between data sets on remote sites, such as franchise systems with a common inventory database or a point of sale (POS) system where redundancy is used.

Selectively share data between remote installations, employing a "publish and subscribe" methodology to ensure efficient message delivery and synchronisation.

At the heart of Message Bus is Message Broker, which manages message queues and processes message data. It identifies Pronto Xi datasets locally and remotely, and automatically handles data exchange between datasets on the same physical server.

Message Broker is independent of any communication protocols, so it functions consistently and reliably, regardless of medium. Message Broker also incorporates several measures to enhance security and data quality, including message validation routines that ensure what is sent is precisely what is received.

You can perform intelligent business tasks without user intervention, such as masking data in specific fields depending on the subscriber. Message Broker also contains a “refresh” function to bring remote datasets into line with a master dataset in case data corrupts or hardware fails.

Extensibility

Message Broker’s service-oriented architecture permits high levels of customisation without compromising stability. At each stage, you can replace standard business rules with custom ones that suit your needs.

Franchise inventory

Quality inventory information is a key requirement for franchise operations. With Message Broker, core inventory data is selectively shared with franchisees. Set up a staging area to hold back master data changes from broadcast until the desired time — for example, you can send price changes at a scheduled time ahead of a promotion.

POS redundancy (Offline POS)

POS systems using redundancy can leverage Message Bus’s advanced technology to keep remote servers synchronised with head office. Incremental changes are continually sent to remote servers so stores can trade with the most up-to-date information.

Administration

Take control of day-to-day administrator tasks — from performing backups and setting network protocols to defining roles and security settings — with complete ease.



System Administration

By utilising System Administration, you can define the usage of your chosen modules, ultimately influencing how Pronto Xi operates for you. While some processes are typically executed only once during set-up, you retain the flexibility to adjust configurations in the future. Moreover, additional System Administration features support continuous maintenance and housekeeping tasks.

The System Administration tool offers a range of functions for managing Pronto Xi, enabling you to oversee specific aspects of the Linux system without requiring knowledge of command lines or file formats; for example:

- backup/restore data
- user control
- terminal control
- printer control
- batch queue admin
- database control

Roles and securities

Control user-level access by a wide selection of roles and security profiles. System administrators can tailor user permissions to restrict access to individual companies, entire modules or specific functions within individual screens.

When new users are created, they are assigned one or multiple roles to define their access to Pronto Xi. To speed up this task, each role contains a list of authorised Pronto Xi modules and functions. Use wildcards to indicate all functions.

Where multiple companies exist, you can specify which companies or directories each user may access. You can also define the access each user has within each company.

Develop custom roles to define a job function according to your company's needs, or use Pronto Xi's "out-of-the-box" roles. You can also add user-defined functions to an existing role.

Use of codes

To prevent a code being used, Code Table Status Control allows you to set an active/inactive status for warehouse, territory, item group and sales representative code tables. Select a specific date to notify users of an upcoming status change.

Data masking

To complement Pronto Xi's tight but flexible functional security, System Administration deploys data masking to restrict access to specific application data. Data masking is also automatically applied to Business Intelligence reporting.

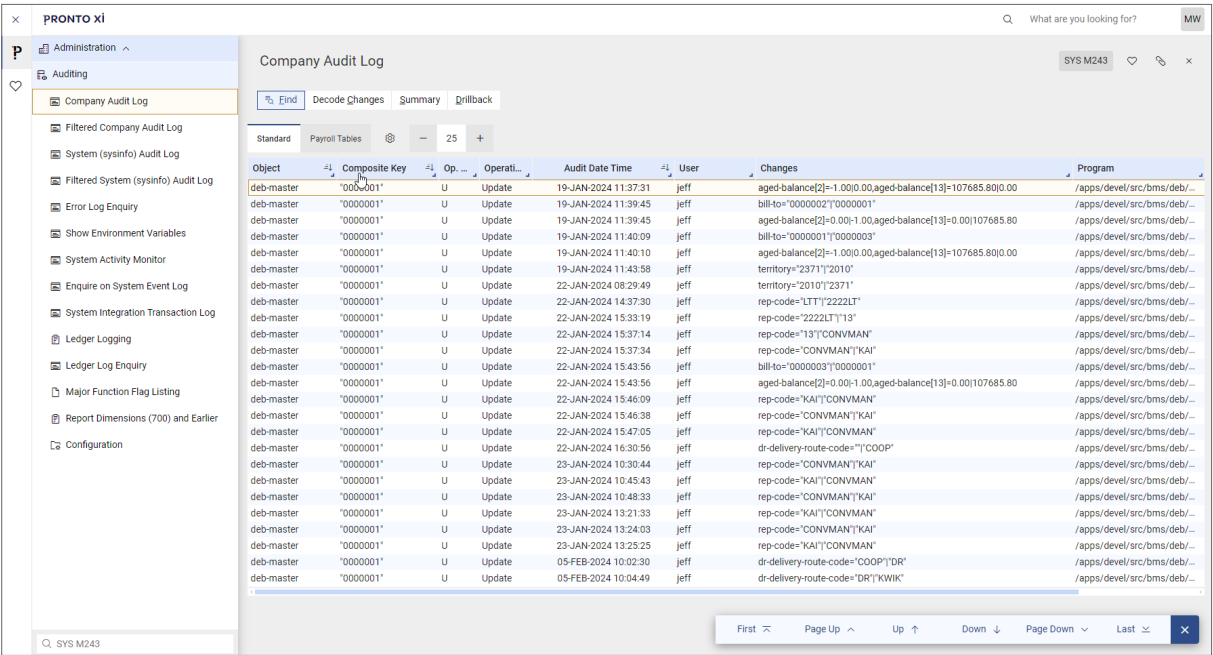
Auditing

Pronto Xi audits many activities within the system and monitors changes to master records and major function flags.

System Audit gives you total control over system changes, and creates reports that detail changes made to system settings, who made them and when. Other reports record changes to "static" master files and transaction processing.

Audit Management's strong audit capability records data changes (insert, delete and update) to key files. Files defined as requiring auditing are flagged at a dictionary or schema level.

The Audit Management menu allows authorised staff to configure the audit environment. You can determine the number of days included in each log file and the number of log files to retain. You can also define which users have security access to audit information for specific data tables.



Object	Composite Key	Op.	Operati...	Audit Date Time	User	Changes	Program
deb-master	"0000001"	U	Update	19-JAN-2024 11:37:31	jeff	aged-balance[2]=-1.00(0.00,aged-balance[13]=107685.80(0.00	/apps/devel/src/bms/deb/...
deb-master	"0000001"	U	Update	19-JAN-2024 11:39:45	jeff	bill-to="0000002"("0000001"	/apps/devel/src/bms/deb/...
deb-master	"0000001"	U	Update	19-JAN-2024 11:39:45	jeff	aged-balance[2]=0.00;-1.00,aged-balance[13]=0.00(107685.80	/apps/devel/src/bms/deb/...
deb-master	"0000001"	U	Update	19-JAN-2024 11:40:09	jeff	bill-to="0000001"("0000003"	/apps/devel/src/bms/deb/...
deb-master	"0000001"	U	Update	19-JAN-2024 11:40:10	jeff	aged-balance[2]=-1.00(0.00,aged-balance[13]=107685.80(0.00	/apps/devel/src/bms/deb/...
deb-master	"0000001"	U	Update	19-JAN-2024 11:43:58	jeff	territory="2371"("2010"	/apps/devel/src/bms/deb/...
deb-master	"0000001"	U	Update	22-JAN-2024 08:29:49	jeff	territory="2010"("2371"	/apps/devel/src/bms/deb/...
deb-master	"0000001"	U	Update	22-JAN-2024 14:37:30	jeff	rep-code="LTT"("2222LT"	/apps/devel/src/bms/deb/...
deb-master	"0000001"	U	Update	22-JAN-2024 15:33:19	jeff	rep-code="2222LT"("13"	/apps/devel/src/bms/deb/...
deb-master	"0000001"	U	Update	22-JAN-2024 15:37:14	jeff	rep-code="13"("CONVMAN"	/apps/devel/src/bms/deb/...
deb-master	"0000001"	U	Update	22-JAN-2024 15:37:34	jeff	rep-code="CONVMAN"("KAI"	/apps/devel/src/bms/deb/...
deb-master	"0000001"	U	Update	22-JAN-2024 15:43:56	jeff	bill-to="0000003"("0000001"	/apps/devel/src/bms/deb/...
deb-master	"0000001"	U	Update	22-JAN-2024 15:43:56	jeff	aged-balance[2]=0.00;-1.00,aged-balance[13]=0.00(107685.80	/apps/devel/src/bms/deb/...
deb-master	"0000001"	U	Update	22-JAN-2024 15:46:09	jeff	rep-code="KAI"("CONVMAN"	/apps/devel/src/bms/deb/...
deb-master	"0000001"	U	Update	22-JAN-2024 15:46:38	jeff	rep-code="CONVMAN"("KAI"	/apps/devel/src/bms/deb/...
deb-master	"0000001"	U	Update	22-JAN-2024 15:47:05	jeff	rep-code="KAI"("CONVMAN"	/apps/devel/src/bms/deb/...
deb-master	"0000001"	U	Update	22-JAN-2024 16:30:56	jeff	dr-delivery-route-code="("COOP"	/apps/devel/src/bms/deb/...
deb-master	"0000001"	U	Update	23-JAN-2024 10:30:44	jeff	rep-code="CONVMAN"("KAI"	/apps/devel/src/bms/deb/...
deb-master	"0000001"	U	Update	23-JAN-2024 10:45:43	jeff	rep-code="KAI"("CONVMAN"	/apps/devel/src/bms/deb/...
deb-master	"0000001"	U	Update	23-JAN-2024 10:48:33	jeff	rep-code="CONVMAN"("KAI"	/apps/devel/src/bms/deb/...
deb-master	"0000001"	U	Update	23-JAN-2024 13:21:33	jeff	rep-code="KAI"("CONVMAN"	/apps/devel/src/bms/deb/...
deb-master	"0000001"	U	Update	23-JAN-2024 13:24:03	jeff	rep-code="CONVMAN"("KAI"	/apps/devel/src/bms/deb/...
deb-master	"0000001"	U	Update	23-JAN-2024 13:25:25	jeff	rep-code="KAI"("CONVMAN"	/apps/devel/src/bms/deb/...
deb-master	"0000001"	U	Update	05-FEB-2024 10:02:30	jeff	dr-delivery-route-code="COOP"("DR"	/apps/devel/src/bms/deb/...
deb-master	"0000001"	U	Update	05-FEB-2024 10:04:49	jeff	dr-delivery-route-code="DR"("KWIK"	/apps/devel/src/bms/deb/...

View a detailed audit log of all data changes

Data quality

Data Quality Management (DQM) increases system availability by reducing the downtime caused by administration processes. DQM has new data-checking programs that supersede the integrity routines in prior versions of Pronto Xi.

Data checks

By default, DQM only checks changed data, making the entire procedure more efficient. You can control the frequency of DQM processes via Application Services and define the types of checks to run.

Data status

The DQM Dashboard displays the status of DQM processes, as well as all identified issues.

Data clean-up

DQM groups issues by module and classifies them as Referential, Calculated or Orphan/Other.

Manage data issues as they arise by correcting master records or performing bulk replacements. DQM validates the corrected data and removes the issue from the DQM Dashboard.

Business Intelligence administration

Pronto Xi gives you complete flexibility to ensure your Business Intelligence suite provides the right information to the right people. Set access controls, user capabilities, and other reporting server functions, including:

- server set-up
- URL path maintenance
- data source configuration
- calendar and time dimension settings

Web interface

A contemporary user interface that functions seamlessly across various platforms



Our user experience (UX) design strategy streamlines processes and boosts productivity. By leveraging contemporary web technologies, the web interface offers a fast and responsive work environment that remains accessible regardless of location or device.

User experience

We've updated the web client to give users more control over their experience. Now you can define which information is displayed, hide columns in data grids, pin relevant screen sections, and prioritise the most important sections.

Usability

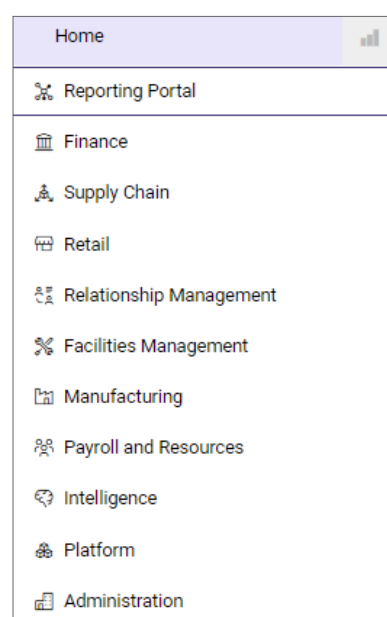
Modern and simple, the web interface makes navigating screens and menus, entering and viewing data, running reports and configuring user preferences extremely straightforward.

The interface caters for various data-entry methods, whether you're using a keyboard and mouse or a touchscreen mobile device.

In addition, Pronto Xi modules have a consistent format and function, making it quick and easy to learn new modules.

Icon support

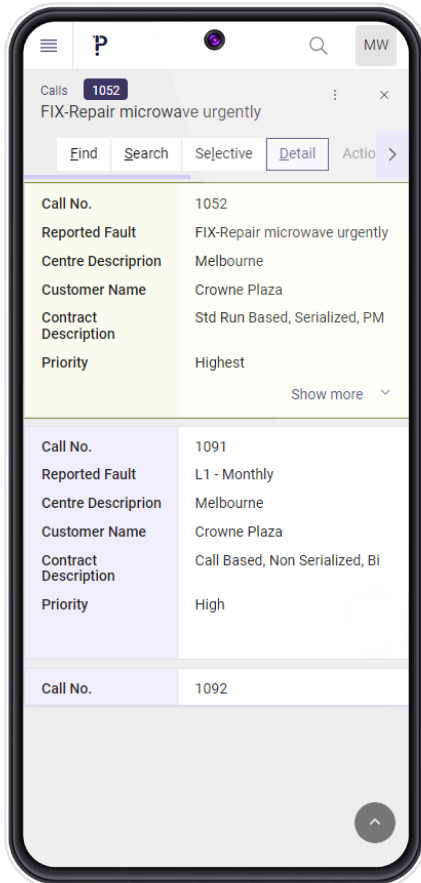
The web client supports a standard list of icons to improve usability, enhance the user experience and make the system more accessible to a broader range of users.



A view of the Pronto Xi menu

Mobile access

Accessible from a mobile device browser and supporting varied screen sizes, Pronto Xi makes it easy to access your business data when you are out of the office or on the road. View Workspaces reports, search Pronto Xi data, update sales orders, view customer relationship management (CRM) information, and much more.



Easily view data grids on smaller screens, like mobile phones

Integrated back pane

An integrated back pane delivers business system information to users within your organisation directly from the web interface.

In addition, it allows you to easily access intranets, external websites, corporate noticeboards, executive information systems, interactive workflow diagrams, reports, business dashboards or customised web pages.

Get the most out of Pronto Xi with these enhanced features



Full Pronto Xi access within a web browser



Elegant and intuitive to navigate



Supports personalisation and shortcuts



Increased user productivity



Quick to learn and easy to use



Available on a range of devices



Secure connection between web interface and server



WebSocket technology delivers real-time field-level validation



HTML5 and CSS3



Latest web UX methodologies

Data grids

Data grids allow you to view Pronto Xi data in a table format. Filter, sort and highlight data according to each user's preferences, and export to a spreadsheet (such as Excel or Google Sheets) or an XML report.

Control data entry by setting personal field defaults. For example, it ensures users create a new customer account using a specific customer type. The personal field defaults enable screens to suggest field values appropriate for the user's role or department.

Data grids also auto-scale to maximise the real estate of your display, ensuring you have the best view of the information you need.

Links

Quick Links lets you attach any file, website or network location to the Pronto Xi database. This means you can associate images, documents, spreadsheets, PDFs, movies or web pages with any stock item, customer, supplier, sales order, purchase order line or any other element within Pronto Xi.

Directly open links from the Pronto Xi screen using a toolbar button, streamlining routine tasks.

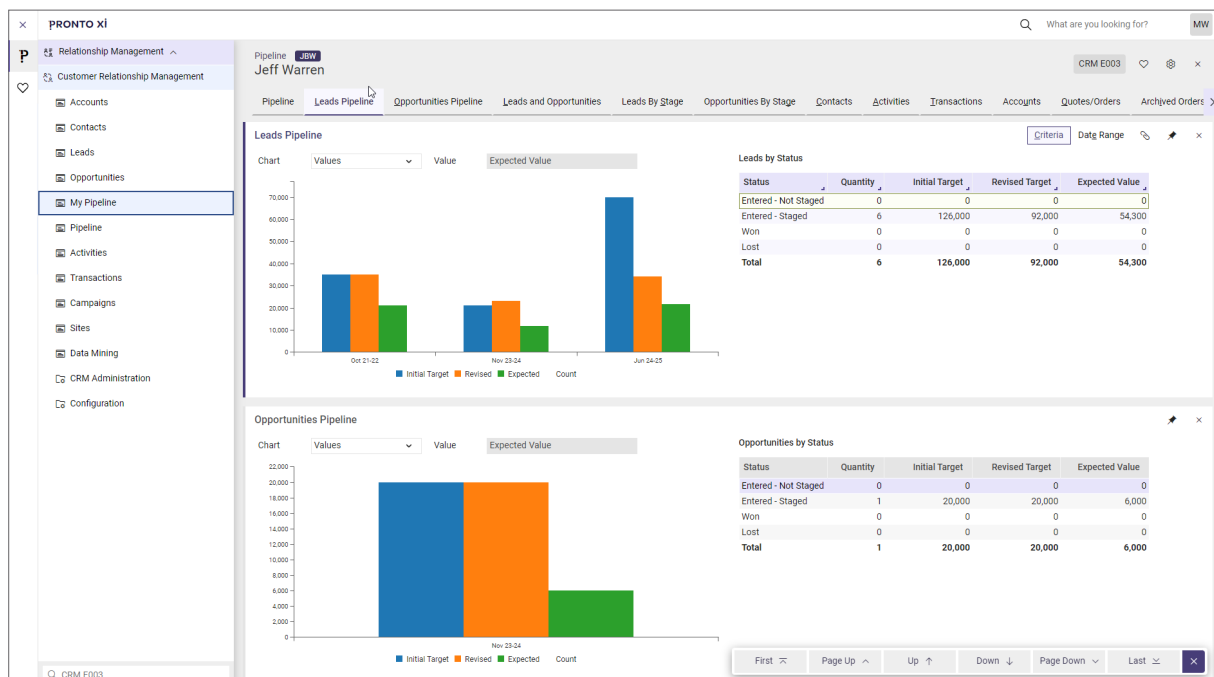
Field-level validation

The latest WebSocket technology delivers fast user performance and real-time, field-level data-entry validation, helping you improve productivity and efficiency.

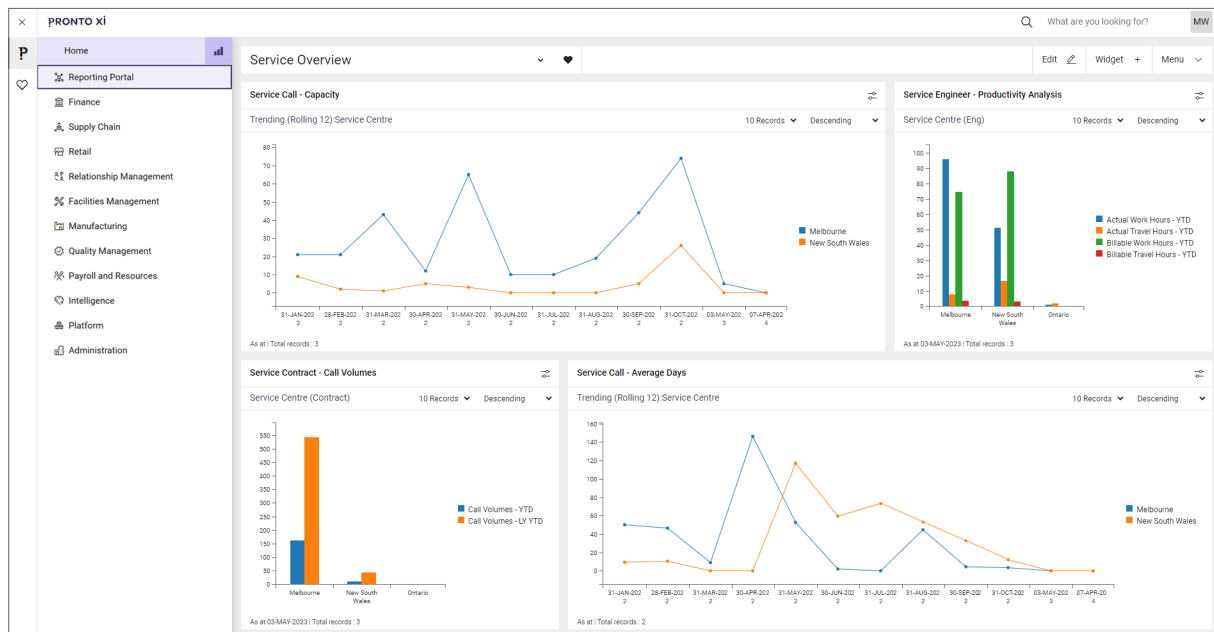
Validation happens at a field level as data entry occurs, not at the end once the form is submitted. This avoids user frustration due to lag time and data re-entry and ensures business process rules are followed during a transaction.

Security

Local Agent is a Windows application that supports a secure web interface and restricted access to an end user's computer for workflows that benefit from increased security, for example, the integration with locally installed programs or communicating with a locally attached hardware peripheral.



An example of the Pronto Xi web interface



Display interactive real-time data with Workspaces

Workspaces

Workspaces is an interactive, drag-and-drop canvas that displays relevant real-time information to staff members. Workspaces facilitates decision-making and priority-setting, enhancing collaboration across your organisation.

Choose from more than 80 key performance indicators (KPIs) and other widgets, and see how you perform against those KPIs in a single click. Further personalise the user experience with a variety of data options, including:

- selecting from a variety of chart types
- viewing trends over a period of time
- sorting, filtering and more

Workspaces is an alternative option to Pronto Xi's right-hand pane.

Search

Enterprise Search lets users quickly find frequently used data or menu functions across modules.

Search all available modules or select the ones most relevant to you. Each search result presents a range of options, so you can easily find the information you need.

For example, searching for a stock item code gives you the option to:

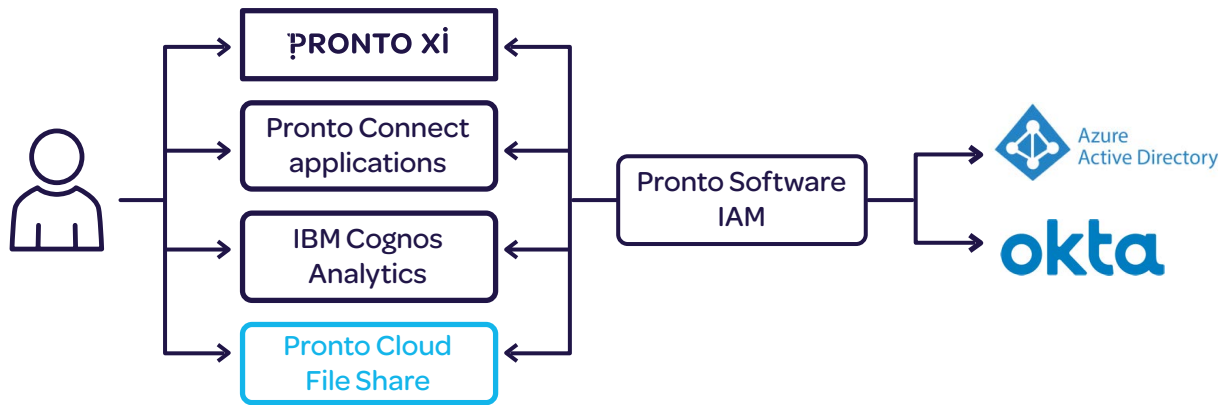
- maintain or enquire about the item
- do a stock adjustment
- do a quality assurance (QA) release

You can also define the default actions for various users.

Enterprise security

Pronto Xi's best-practice application security standards help keep your organisation safe





Overview of how Pronto Software Identity and Access Management works

Security standards

Regular security penetration testing ensures your organisation remains protected against new and evolving security threats. Pronto Xi strictly adheres to security standards and industry best practices to help safeguard your organisation's security.

An example? Communications use digital certificates and highly secure protocols such as HTTPS and WSS (WebSockets over SSL/TLS).

Application security

Pronto Xi's administration tools enable you to control user permissions by using roles and security profiles — give scope permissions to individual companies, modules, screens or functions. With screen customisation, you can even control the individual fields a user sees.

In addition, data masking can be used to limit the data a user can access, such as restricting access to individual locations, territories, branches, asset groups and more.

These application security capabilities can also help you achieve segregation of duties (SoD).

Infrastructure security

We highly recommend using digital certificates and reverse proxy servers to maximise the security of your infrastructure. Pronto Software and our partners have extensive expertise in deploying infrastructure that puts the security of your business at the forefront.

Multi-factor authentication

Pronto Software Identity and Access Management (IAM) enhances Pronto Xi's enterprise security by providing a single, consistent multi-factor authentication solution for a number of Pronto Xi applications.

Single sign-on

Users login to Pronto Xi and then access related applications without needing to login again, making the login process frictionless yet highly secure.

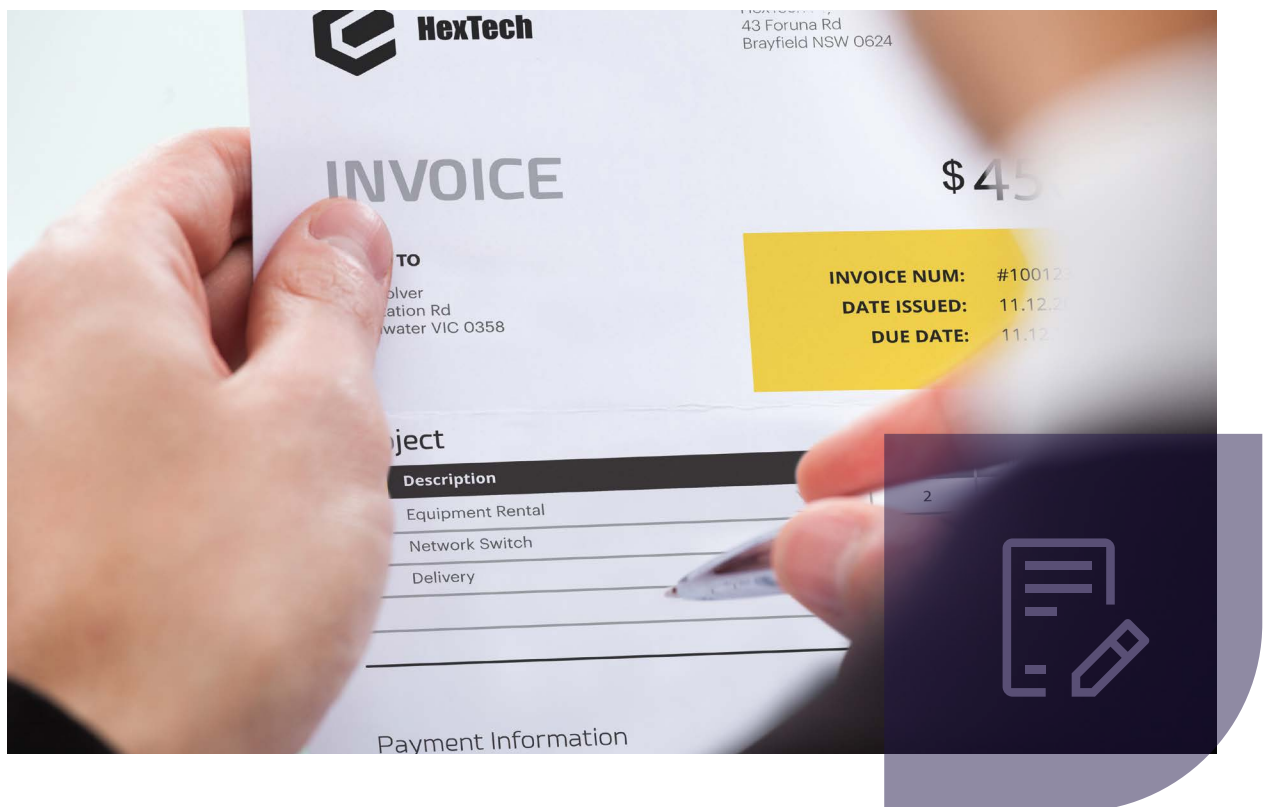
Supported applications

Identity and Access Management is supported on the web interface, Employee Portal, Mobile Service, Resource Scheduler, IBM™ Cognos™ Analytics*, and Pronto Cloud File Share.

*IBM and Cognos are trade marks of International Business Machines Corporation, and are registered in many jurisdictions

Forms management

Design, produce and distribute documents aligned to your brand with TrueForm Neo, a user-friendly forms management solution



TrueForm Neo

TrueForm Neo allows you to format and personalise your customer-facing and business documents and distribute them from Pronto Xi.

Form designer

With an intuitive design interface, TrueForm Neo simply creates high-quality, professional forms, including invoices, statements, purchase orders, credit notes, picking slips, pay slips and many others.

Accurately position boxes, lines, graphic elements and images such as logos to ensure a professional-looking output.

Barcodes

TrueForm Neo offers native barcode support, so any piece of data, such as an item code, customer code or invoice number, automatically converts into a barcode or QR code format at print time.

Pagination control

TrueForm Neo handles all pagination requirements, giving you complete control over your page design.

Templates

With a range of standard templates in both landscape and portrait formats, TrueForm Neo gets you up and running quicker with key business forms. Templates include:

- Sales Order Quotation
- Sales Order Picking Slip
- Sales Order Delivery Docket
- Sales Order Confirmation
- Sales Order Tax Invoice
- Sales Order Credit Note
- Sales Order Transfer
- Payment Summaries
- Overdue Letters
- Purchase Order
- Customer Statement
- EFT Remittance
- Pay Slip
- Advanced Warehouse Picking Slip
- Consignment Note
- Work Order Job Card
- Plant Work Job Sheet
- Progress Claim Invoice
- Service Docket
- Work Instructions

All standard templates contain alternate row shading for the detail area of the forms, placeholders for logos, and data mapping from standard Pronto Xi fields.

Conditional display

Data, static text and graphic formatting can be made conditional on data within the form, enabling businesses to operate in multiple languages, use different logos for different trading names or suppress certain fields for particular customers.

Printer queue management

Managed as part of a central server component, TrueForm Neo can manage print queues so you can control an array of functions, including printer queue configuration and the management of log files.

Form output management

By converting manual procedures into a single automated electronic process, TrueForm Neo efficiently distributes business documents.

Key features include:

- an intuitive interface to define document distribution rules and workflow
- simplified print queues
- seduced (or eliminated) physical document storage and distribution costs
- automatic conversion of raw Pronto Xi data into professionally published PDFs for distribution
- dynamically defined document names and save locations for simple archiving

You can email any Pronto Xi document or report directly from Pronto Xi, reducing printing and postage costs, and the labour costs of folding, addressing and posting documents. By fully automating document delivery, you also reduce the time it takes to do a monthly statement run from days to minutes.



Tasks and alerts

Automation and efficiency tools to streamline tasks and operations

Alerts

Alert Intelligence provides automated alerts that facilitate exceptional management, automation and system integration. It allows you to define which events trigger a notification, who is notified and the action to take. For example, it could alert you to the processing of an unusually high transaction through Accounts Payable, inventory levels dropping below the minimum or a service call being allocated to a technician.

Alert Intelligence isn't just limited to event monitoring. It also periodically checks the status of any record or set of records at scheduled times. For example, a manager could establish a monthly Alert Intelligence task that raises an alert when expenses exceed budget by more than 10%.

In addition to notification methods such as email and SMS messages, Alert Intelligence uses webhooks to send data to other business applications, calling the APIs directly or using middleware (such as Zapier or IFTTT) that includes out-of-the-box integration with a large number of applications. This do-it-yourself method enables businesses to build custom integration workflows with little or no development effort.

Use Alert Intelligence in conjunction with signed URLs to immediately give users actionable options at the click of a button, such as accepting a roster or approving a request. Signed URLs occur via the Pronto Notifier app, an email button, SMS message link, or even a Slack channel button in a webhook integration.

Tasks

Task Intelligence extends the functionality of Alert Intelligence to ensure tasks are carried out quickly and efficiently. Assign staff to tasks and automatically synchronise these tasks with each person's Microsoft Outlook or Microsoft 365 task list.

You can also apply a range of criteria to a task, including how the staff member should be notified, how much time has been allocated and the task priority. Specify a time for a reminder notice to be sent and provide feedback about the task status.



Data

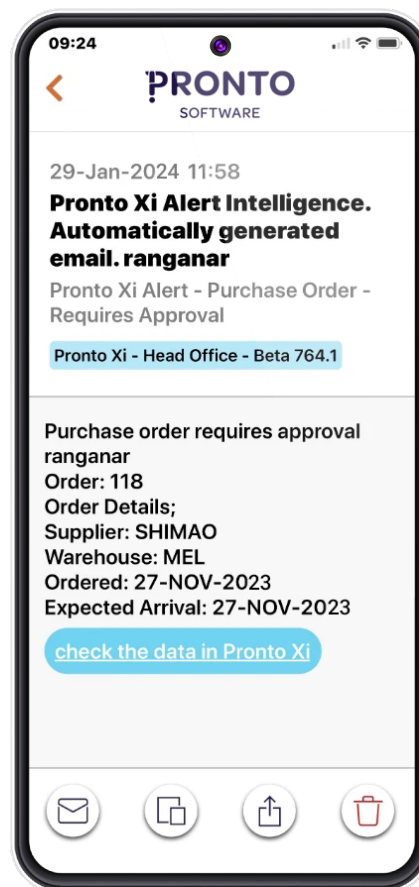
Data Intelligence enables your staff to extract and present data. Filter, sort and highlight data tables to suit individual needs, and export to formats including XML, OpenDocument Spreadsheet (ODS), Comma Separated Value (CSV) and Excel.

Data Intelligence also includes tools to help you find and secure information within your data tables. The Data Finder searches for a particular value across multiple tables, while the Table Security tool protects valuable data by specifying who can access which tables.

Notifications

Available on iOS and Android, the Pronto Notifier app lets users know when key events occur within the system based on Alert Intelligence triggers in Pronto Xi.

Pronto Notifier works across the supply chain, helping you meet customer demands on time. For example, get notified about production downtime, any urgent warehouse replenishment requests, or purchase order approval requests. The app allows you to click through to Pronto Xi screens from the notification for quick action when you're away from your desk. In addition, because the app maintains all alerts in one place, you can action multiple items rapidly.



Get notified instantly via Alert Intelligence



Developer tools

Implement more advanced customisation to the codebase using our tools



Rapid Application Development (RAD)

Pronto Software's Rapid Application Development (RAD) is a fully integrated, fourth-generation language facility that enables developers to extend or generate Pronto Xi applications — from simple to complex — with minimum time and effort.

RAD's key features include:

- data dictionary (database) generation and maintenance
- **4GL** — the fourth-generation language used in most Pronto Xi applications
- **SQL** — a query language facility for general reports and ad-hoc user queries
- **LST** — the default report generator used with SQL
- **RPT** — an alternative to LST for more complex reports
- screen-based application generation and maintenance routines
- interactive program debugging facilities

Software development kit

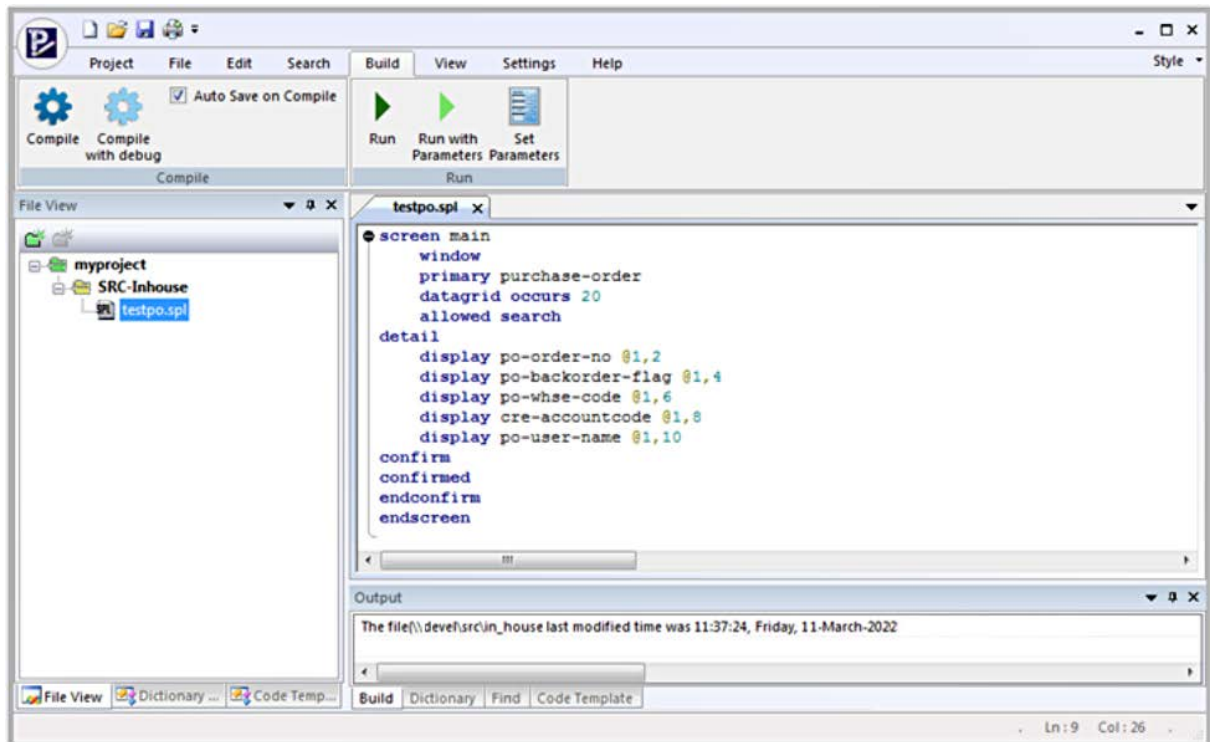
The Software Development Kit (SDK) is a resource centre for Pronto Xi developers and can be used in conjunction with RAD. It includes documentation, code samples, tips, tools and utilities — all collected into a central repository that continually evolves and grows over time as our community requires new programmatic functionality.

The SDK contains detailed technical information covering:

- Pronto Xi Object ActiveX control
- component libraries comprising both core and publicly exportable procedures
- API calls
- program calling methods
- suppressed data entry fields
- dictionary objects and fields
- code samples

Real-time trace

Real-Time Trace Control is a diagnostics utility that tracks, stores and reports the activity of Pronto Xi functions. Used by developers and support teams, this function traces input/output (disk reads/writes), procedures and the environment under which a program was executed. Use RAD to test or troubleshoot custom code changes.



Build and develop extensions to Pronto Xi

API Integration Platform

Utilise industry-standard web services architecture through Pronto Connect



Advancements in mobile communications have significantly lowered the cost and increased the accessibility of smartphones and tablet computers. Moreover, data transfer across different platforms is now cost-effective, with real-time data-transfer technologies now faster, more reliable and more secure. Both HTML5 and JavaScript have enabled the development of adaptive user interfaces that function seamlessly across various devices.

APIs

Application Programming Interfaces (APIs) streamline the data exchange process between disparate applications or processes. APIs empower developers to establish seamless and efficient data exchange mechanisms for applications, eliminating the need for manual intervention. This streamlines operations, minimises data duplication and reduces human errors, ultimately leading to significant enhancements in productivity and cost efficiency.

Representational State Transfer (REST) is the most widely used among the various APIs. Pronto Connect provides pre-built RESTful APIs and a flexible development environment, enabling you to create customised APIs for better information flow.

Web services architecture

A web services architecture offers numerous advantages over traditional methods like “flat file” or field-based API connectivity.

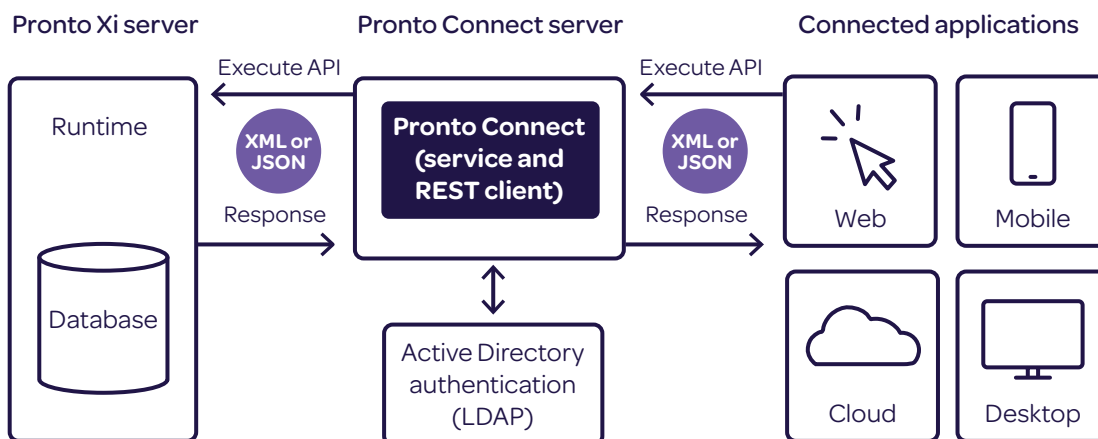
The benefits of a web services architecture include:

- Real-time information exchange, enabling tasks to be carried out with the most current data available rather than outdated information
- User authentication, ensuring that only authorised individuals can access and view data
- The elimination of the need to uphold a flat file transfer system, leading to time and cost savings
- Reduced upload or synchronisation errors due to a dependable messaging system that guarantees the delivery of requested data as anticipated

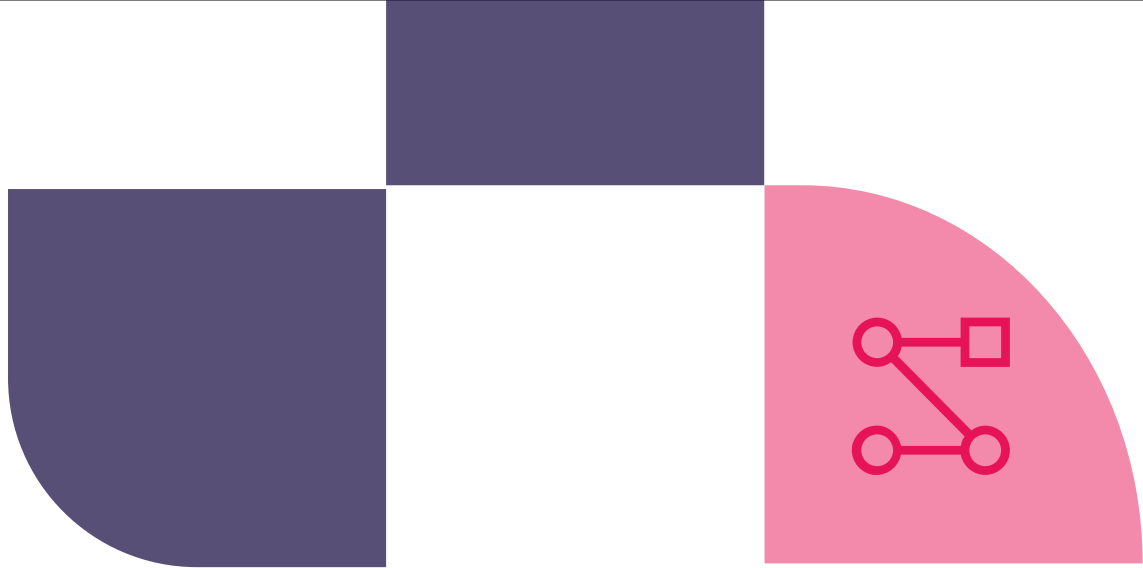
Technical capabilities

Pronto Connect’s technical capabilities include:

- dynamic data transfer using web-services
- document-based APIs (XML, JSON)
- incoming web services API calls
- outbound HTTPS calls via Runtime
- user-based security, which restricts data access based on the connecting user
- secure data transfer using Secure Sockets Layer (SSL)



Overview of how Pronto Connect works



Pronto Xi Sync

Fully leverage the power and functionality of Pronto Xi Enterprise Resource Planning (ERP) with Pronto Xi Sync

Customisation is typically necessary for most enterprise integrations with third-party applications. Integrating any third-party application into any ERP system requires thorough attention to downstream processing and data integrity from a single source of truth. Post-implementation, these integrations also demand regular maintenance and enhancements to stay abreast of evolving technology and changing business processes.

Pronto Xi Sync provides a lean platform to manage your integrations with Pronto Xi efficiently. It utilises streamlined tools and technology patterns, eliminating the need for a dedicated integration team, and offering a bloat-free experience compared to other integration platforms and gateways.

The system utilises APIs and data-transfer mechanisms that seamlessly align with Pronto Xi, facilitating ongoing support and troubleshooting for day-to-day business operations.

Pronto Xi Sync was built from the ground up to work natively with Pronto Xi and provides a framework for connecting other software applications. With its secure infrastructure, Pronto Xi Sync supports organisations as they grow and add more complex software to their ecosystem. Pronto Xi Sync allows rapid connection to the systems and tools leaders often rely on to run high-performance teams. These integrations aim to sync software and data across the business, ensuring employees stay connected to the latest updates, thereby boosting the productivity and results of day-to-day operations.

Pronto Woven

Pronto Woven is Pronto Software's award-winning digital consultancy division. Our team's innovative solutions extend the capabilities of Pronto Xi ERP to transform customer and employee engagement across digital channels.

Deployment

With flexible deployment options to suit your implementation needs, Pronto Cloud is a smart solution for your business



Pronto Cloud

Pronto Cloud, our cloud and hosted solutions division, offers a range of benefits for Enterprise Resource Planning (ERP) implementation — from lower up-front licence costs to a reduced need for in-house IT resources.



Cloud ERP

The ideal option for businesses looking to significantly lower up-front costs and simplify the management of their hardware requirements? Pronto Cloud.

A cloud-based ERP removes the need to invest in infrastructure, meaning businesses no longer have to pay for ongoing hardware support. Pronto Cloud also hosts non-Pronto Xi systems in our data centres so you can get rid of your server room completely.

Cloud implementation offers advantages for small and medium-sized businesses, in particular. It's a scalable solution, so you choose the applications you need — without paying for those you don't.

In addition, Pronto Cloud supports a mobile business environment by giving users access to their business data whenever they want and wherever they are. All you need is an internet connection.

However, if you want to remain on your own infrastructure (outside of the Pronto Cloud environment), Pronto Cloud can still help with our Managed Services which includes building your platform, remote monitoring, disaster recovery, management and patching.

Data security

Data security is a critical consideration for any business. Pronto Cloud uses secure, purpose-built data centres located across Australia. We offer guaranteed uptime rates of 99.99% and store backup data across multiple data centres.

In addition, Pronto Cloud provides a comprehensive security solution using:

- the latest hardware and software solutions
- authentication best practices
- 24/7 security and monitoring
- encryption in transition and at rest
- ISO 27001
- ASAE 3402 auditing
- compliance and more

All systems receive nightly backups, which are replicated automatically across multiple data centres. Perform data recovery in a matter of minutes.

Disaster recovery

Pronto Cloud's Disaster Recovery (DR) solutions continuously protect your data and enables your business- critical applications to be back online rapidly when a disaster strikes.

System Recovery Service (SRS) is a disaster recovery solution offered to cloud hosted customers, where Pronto Cloud replicate your production cloud environment to a secondary datacentre. As the replication is created within the same environment as the original, teams are able to switch to the parallel system with data as current as seconds for the incident with a Recovery Point Objective (RPO) of under a minute.

Pronto Cloud EverSync is a disaster recovery solution that continuously protects business data and enables critical applications for on-premise organisations. Eversync sits as a protective layer on top of your virtualised servers, that replicates the data in real-time. EverSync removes the need of duplicated infrastructure and frees up valuable IT resources required for back-up management.



About us

PRONTO

SOFTWARE

We are an Australian developer of award winning business management and analytics solutions. Pronto Xi, our Enterprise Resource Planning (ERP) software, integrates accounting, operational and mobile features in a single system – optimising business processes and unlocking actionable insights. That's why for more than 45 years, over 1,500 Australian and global organisations, across a wide range of industries, have trusted Pronto Xi to simplify their most complex challenges.

With headquarters and our Development Centre located in Melbourne, we have support offices and consultants based across Australia, as well as a global network of Resellers and Solution Partners. Specialised business units within Pronto Software have the expertise to assist you with pivotal technology – Digital Transformation with Pronto Woven, Cloud and Hosting services with Pronto Cloud and Business Intelligence solutions with Pronto iQ.

When you choose Pronto Software, you gain a team with deep industry experience, giving us the ability to understand your specific needs and build innovative solutions that drive business growth and revenue.

info@pronto.net
1300 PRONTO (1300 77 66 86)

 pronto.net

 Pronto-Software

 ProntoSoftware