

PRONTO xi

Business Intelligence Overview



Data

Part of Analytics

Trademarks

Pronto Software, Pronto, Pronto Xi, the Pronto interrobang logo, the P interrobang logo, Pronto Woven, Pronto iQ and Pronto Cloud are all registered trademarks of Pronto Software Limited. All other marks are the property of their respective owners. Copyright © 2024 Pronto Software Limited (ABN 47001337248).

Disclaimer

This document contains statements related to our current and future developments that may constitute forward-looking statements. They are subject to changes and may be available in a Pronto Xi 780 service pack or future release of Pronto Xi. All diagrams, drawings, product screenshots and any other types of visualisations in this document, use demo or synthetic data created for display purposes only.

Contents

Data	5
Across various query modes, we've got you covered	5
Key performance indicators	5
Transactional data	6
External data	6
Data quality	6
Data tables	6
Data exploration	6



Data

Pronto Xi's rich visualisations process vast amounts of business data and drive the reports you need to make informed decisions



Whether you are accessing KPI snapshots via Workspaces or building real-time reports from transactional data, Business Intelligence (BI) delivers the answers you're looking for.

For extensive dataset analytics, Analytics Cubes is a powerful tool that processes high volumes of data rapidly, meaning you no longer need to spend time waiting for reports to run.

Across various query modes, we've got you covered

Dynamic Query Mode (DQM) and Compatibility Query Mode (CQM) are the two query modes supported by IBM™ Cognos™ technology*. Pronto Software bases all our core packages and reports on CQM. DQM is a 64-bit Java query engine and, for several years, IBM's preferred query mode with most of the latest features and functionalities in IBM Cognos

Analytics built on DQM.

While we will continue supporting existing CQM packages and their content, starting with Pronto Xi 780, all core packages and operational reports will be based on DQM.

Key performance indicators

KPI Library includes a large number of industry-standard KPIs and business metrics.

Data is aggregated across most Pronto Xi modules — including General Ledger, Accounts Receivable, Sales, Inventory and more — and stored based on pre-defined drill paths, delivering fast access to your critical data. Choosing your snapshot frequency means the data is as fresh as you need it to be.

*IBM and Cognos are trade marks of International Business Machines Corporation, and are registered in many jurisdictions

Transactional data

Access your operational data and build reports and dashboards with IBM Cognos Analytics.

View real-time data when needed, improving the accuracy and timeliness of your operational reports and monitoring. Real-time operational reports have built-in filters, giving you greater control over the displayed information.

External data

IBM Cognos Analytics makes it easy to upload data from external sources, clean it and then use it to create datasets and data modules. Gain deep insights into trends by linking this data directly to Pronto Xi transactional information.

Data quality

When you rely on your data to make critical decisions about your business, its quality and integrity are paramount.

Data Quality Management (DQM) provides you with visibility of and confidence about the integrity of your data. It monitors your data's integrity and relationships, and highlights areas requiring attention. If this happens, you'll receive an alert and can access a dashboard of exceptions to review and act on.

DQM also has a range of advanced data correction tools to help with system migrations, poor-quality data from legacy systems and more.

In addition, you can run DQM in the background, ensuring data quality without impacting on users.

Data tables

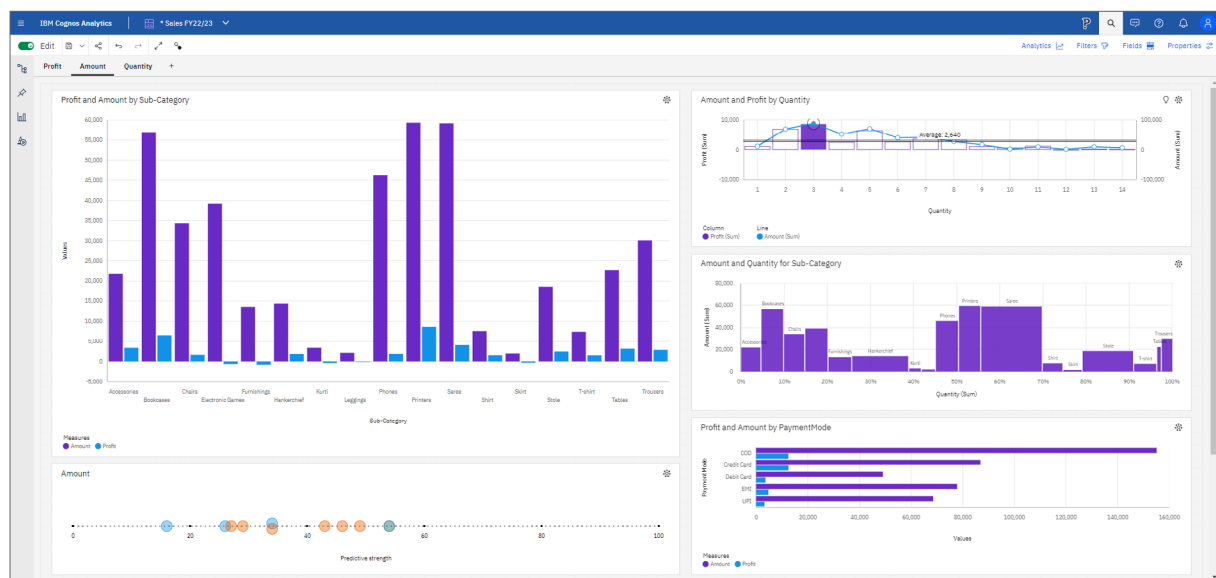
Data Intelligence (DI) simplifies the creation of your data tables. A user-friendly interface makes it easy to create, filter and sort data tables without advanced technical skills.

In addition, DI Objects effortlessly merges existing tables, inputs calculations and other rules, and combines data from multiple tables.

Schedule data populations to happen in the background, and then automatically create list-style IBM Cognos reports or author more complex reports.

Data exploration

You don't have to be a data scientist to uncover insights from interconnected data. IBM Cognos Analytics' exploration functionality discovers hidden relationships and patterns in complex data. With this information, you can create insightful, simple and easy-to-understand data relationships, which you can harness in your reports and dashboards.



Uncover hidden data insights with IBM Cognos Analytics' intuitive exploration tools



About us

PRONTO

SOFTWARE

We are an Australian developer of award winning business management and analytics solutions. Pronto Xi, our Enterprise Resource Planning (ERP) software, integrates accounting, operational and mobile features in a single system – optimising business processes and unlocking actionable insights. That's why for more than 45 years, over 1,500 Australian and global organisations, across a wide range of industries, have trusted Pronto Xi to simplify their most complex challenges.

With headquarters and our Development Centre located in Melbourne, we have support offices and consultants based across Australia, as well as a global network of Resellers and Solution Partners. Specialised business units within Pronto Software have the expertise to assist you with pivotal technology – Digital Transformation with Pronto Woven, Cloud and Hosting services with Pronto Cloud and Business Intelligence solutions with Pronto iQ.

When you choose Pronto Software, you gain a team with deep industry experience, giving us the ability to understand your specific needs and build innovative solutions that drive business growth and revenue.

info@pronto.net
1300 PRONTO (1300 77 66 86)

 pronto.net

 Pronto-Software

 ProntoSoftware