



**PRONTO xi**

Overview

# ERP & Analytics Software

Blending innovation and continuity

## Trademarks

Pronto Software, Pronto, Pronto Xi, the Pronto interrobang logo, the P interrobang logo, Pronto Woven, Pronto iQ and Pronto Cloud are all registered trademarks of Pronto Software Limited. All other marks are the property of their respective owners. Copyright © 2024 Pronto Software Limited (ABN 47001337248).

## Disclaimer

This document contains statements related to our current and future developments that may constitute forward-looking statements. They are subject to changes and may be available in a Pronto Xi 780 service pack or future release of Pronto Xi. All diagrams, drawings, product screenshots and any other types of visualisations in this document, use demo or synthetic data created for display purposes only.

# Contents

<b>Blending innovation and continuity</b>	<b>4</b>	<b>Web Interface</b>	<b>19</b>
		Highly accessible	19
		Accelerate accuracy	19
<b>Introduction</b>	<b>5</b>	<b>Pronto Software services</b>	<b>20</b>
<b>About Pronto Xi</b>	<b>6</b>	Implementation	20
Core offering	6	Training	21
Additional competencies	7	Customisations	21
Extra intelligence	7	Ongoing support	21
		Online help	21
<b>Platform &amp; Applications</b>	<b>9</b>	Managed services	21
Foundation	9	Enterprise security	22
Integration	10	Roadmap	22
Financials	10		
Payroll & Resources	11		
Distribution	11		
Retail	12		
B2B eCommerce	12		
CRM	13		
Supply Chain	13		
Asset & Facility Management	14		
Manufacturing	14		
<b>Intelligence</b>	<b>15</b>		
Applications	16		
Visualisations	16		
Data	17		



# Blending innovation and continuity

## A message from our Managing Director

Pronto Software is an Australian developer of award-winning business management solutions. Pronto Xi — our flagship Enterprise Resource Planning (ERP) software — is built around a core engine of financials and business reporting, helping you monitor and control every aspect of your business, from the top floor to the shop floor.

From improving productivity and customer service to increased inventory accuracy, our software allows you to gain actionable insights, quickly identify what is making you money and help you grow your best opportunities. We consistently invest in bold R&D initiatives that help us deliver groundbreaking results for your business.

We have headquarters and a development centre in Melbourne, as well as offices nationwide. Our consultants work with you to offer support and solve your challenges.

The Pronto Software group includes Pronto Woven, our digital consultancy division; Pronto Cloud, which offers cloud and managed solutions; and Pronto iQ, which enables powerful data analytics and insights. As a team, we strive for innovation — in how we work and in the technology we build.

When you choose Pronto Software, you get a pinpointed approach to helping you achieve exceptional business outcomes, assisted by a team with decades of industry experience. It's why Pronto Software is the trusted IT partner of more than 1,500 global and Australian businesses — and has been for over 45 years.

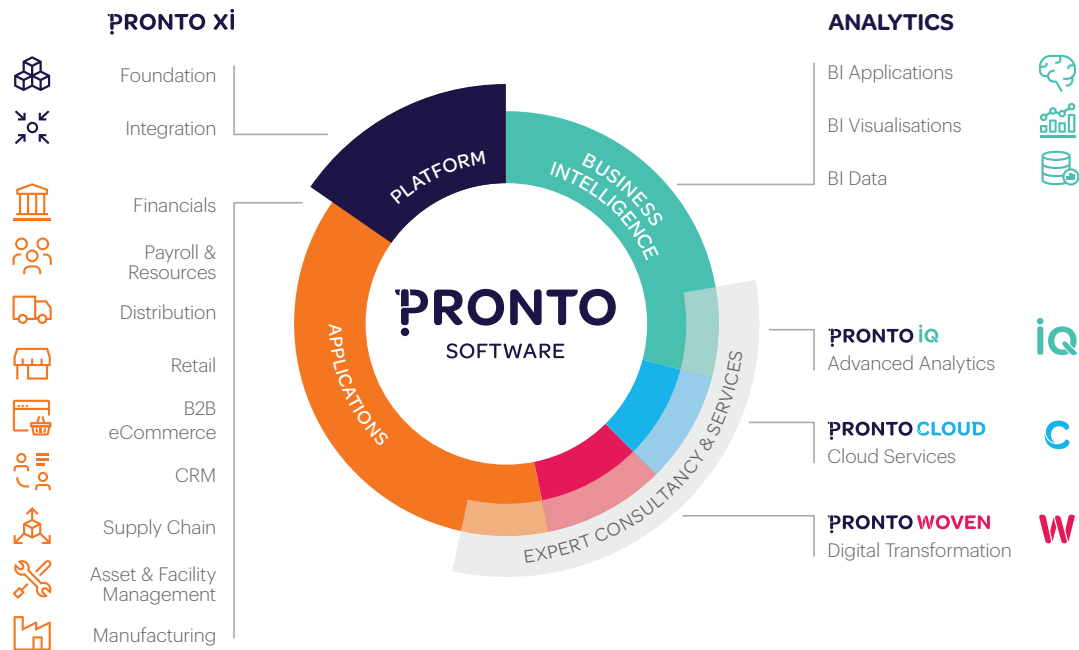
A handwritten signature in white ink, appearing to read 'Chad Gates'.

**Chad Gates**

Managing Director, Pronto Software Limited

# Introduction

We focus on helping you run your business so you can focus on growing it



Powerful ERP software manages critical key aspects of your day-to-day business operations — from financials, sales, marketing, distribution and manufacturing to supply chain, asset and facility management — all within one fully integrated system.

In our work with Australian and global businesses across a wide range of industries, we've learnt that your business size or type doesn't limit your ERP needs. You could be a growing local business, a global manufacturer, or somewhere in-between. For us, it always starts with your business goals because these lead us to build a solution that answers your most challenging questions. Every business we engage with is an opportunity to develop a long-lasting partnership.

Our flagship ERP, Pronto Xi, is modular, which means we build solutions based on your business needs and not the other way around. Our diverse competency set provides your business with solutions to increase productivity, lower costs, simplify tasks and achieve more — faster.

Begin with our core offering of business basics, add the competencies that suit your requirements and leverage actionable insights from our business intelligence tools built on IBM™ Cognos™ technology\* — trusted by more than 23,000 leading companies worldwide. With easy and immediate insights into your company's innermost workings, you can quickly and confidently make critical decisions.

Whether you're seeking to expand your workforce or improve workflow, Pronto Xi can help you take your business where it needs to be.

\*IBM and Cognos are trademarks of International Business Machines Corporation, and are registered in many jurisdictions

# About Pronto Xi

Your business relies on tools that help to increase productivity, lower costs, and simplify tasks. Instead of the market-standard “one-size-fits-all” approach, Pronto Xi easily adapts to your business structure and processes

Pronto Xi's flexible and scalable offering suits a wide range of industries. Build your ideal business management solution based on our core offering, add competencies and unlock valuable insights to propel your business forward.

## Core offering

### **Let's start with the basics**

No matter your industry, size or market, there are standard things you need to take care of as a business. And that's where our core offering steps in. At Pronto Software, we'll help you build a foundational solution to increase results with minimal effort.

In developing the fundamental platform for Pronto Xi, we listened to business leaders from across the globe and built a core framework that expands and grows as you do.

Use Pronto Xi to establish a comprehensive general ledger, take command of tricky paperwork, optimise your supply chain and much more. Get instant insight into your business and make crucial business decisions with confidence. Pronto Xi is protected by enterprise-grade secure authentication systems to keep your business activity safe.

**PRONTO XI**

Pronto Xi Essentials – included modules



Pronto Xi product family

## Additional competencies

### Flex and grow

Working with a diverse customer base has given us the intel to develop products that suit different specialisations, sizes and industries. Building long-lasting relationships with our customers has also enabled us to develop a comprehensive suite of competencies encompassing almost all facets of business.

We'll help you choose the right modules for your business requirements and can adapt them to suit your needs better.

By getting the most out of Pronto Xi, you'll get the most out of your business.

## Extra intelligence

### Boost your business IQ

When juggling a business's myriad demands, it's easy to overlook the finer details and even easier to miss the bigger picture.

Our analytics, fine-tuned to your requirements, work hard to uncover the numbers and patterns to support crucial business decisions. When your most significant challenges are lost in complex or repetitive data, we help you find answers.

Built on IBM Cognos Analytics technology, our integrated Business Intelligence (BI) modules reveal unique business insights, from a broad overview to a minute detail.

IBM Cognos Analytics gives you instant access to a range of tools, enabling you to better analyse your business through a single, easy-to-use interface.

And, because it's all online, you can access the information you need whenever and wherever you want.



# Platform & Applications

Easily adapt individual modules from our competency set to suit your unique business needs



## Foundation

### A platform to build on

Pronto Xi's modular applications rely on a virtually bulletproof core infrastructure, so they run cleverly and seamlessly.

It begins with the “nuts and bolts” that enable the system to operate: the relational database, operating systems, Runtime and the web interface — your portal to Pronto Xi's applications.

For added flexibility and connectivity, Pronto Connect offers industry-standard RESTful APIs allowing web, mobile and other applications to access Pronto Xi data via web services. These integration opportunities let you transform your Pronto Xi solution into a platform of connected applications — including our web applications and native mobile apps and our rapidly expanding Solution Partner ecosystem — all of which have the reliability and transactional performance of Pronto Xi at their very core.

Solutions like Webhooks and Alert Intelligence allow you to build do-it-yourself data-broadcast integrations to push data to third-party applications via Zapier, IFTTT and other middleware. Alert Intelligence and signed URLs can also be integrated into the Pronto Xi Notifier App.

A rich Applistructure layer lets you perfectly fit Pronto Xi to your specific business needs. Set up system alerts, define system tasks, create information data grids for a particular business process, or customise screens to see the most important operational information at a glance.

Pronto Xi also allows you to easily complete day-to-day administrator tasks, from performing backups and setting network protocols to defining roles or security settings.

For businesses that want to do their own customisation, there are a range of developer tools, including the Rapid Application Development Environment (RAD) and a Software Development Kit (SDK).



## Integration

### The missing link

The Pronto Connect API platform enables secure and real-time data exchange between Pronto Xi and related mobile, web and desktop applications. It also provides the foundation for system-to-system integrations.

With a rich library of standard APIs, plus the ability to author custom APIs, Pronto Connect is highly adaptable to your business needs.

Expand operations and improve the customer experience by integrating Pronto Xi with other software platforms through Pronto Xi Sync. Data flows seamlessly between systems, allowing you to maintain a single source of truth without the accompanying growing pains or administrative burden.



## Financials

### Achieve perfect balance

Accountability is the bottom line. Pronto Xi's powerful transaction engine integrates all your financial activities into a single control centre.

Achieve perfect balance with the fully integrated General Ledger, and get a complete financial picture with automatic transaction posting from sub-ledgers, including Accounts Receivable, Accounts Payable and Inventory. You can also manage multiple currencies and companies, making it easy to control complex enterprise data across group companies.

Financials give you crucial insights and the information you need to monitor and maintain your bottom line and grow profitability.



## Payroll & Resources

### Maximise the potential of your assets

Optimise your business resources with Pronto Xi's Resource Management and Resource Scheduler modules. Integrating directly into the Project, Service, Plant Maintenance and Payroll modules, this functionality enables you to manage resources, teams or equipment efficiently. In addition, the Human Resource Management (HRM) module helps you control detailed staff information so that you can meet the personnel management requirements of your organisation.

Pronto Xi's fully integrated Payroll module is compliant with Australia's Single Touch Payroll (STP) guidelines. It takes care of full-time, part-time and casual employees, hourly rates and annual salaries, and flexibly handles employee leave and tax changes. Pay run workflows are easy to set up and are powered by in-depth reports, including summaries and discrepancies.

The Employee Portal offers your staff a self-service option for pay slips, as well as leave and timesheet entry.



## Distribution

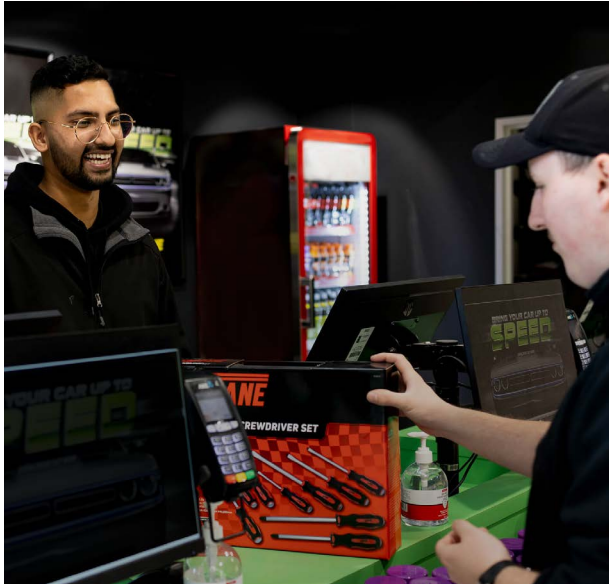
### Inventory in motion

Keep the heart of your supply chain ticking with Distribution.

Easily handle all aspects of your sales ordering, and automatically update your stock and inventory levels.

Get a clear picture of inventory across all business locations through the real-time tracking of stock levels and movement.

Keep a keen eye on stock coming in and out of your door with the Sales and Purchasing modules. Automatically allocate backorders, replenish stock, calculate freight, and track dispatch across multiple countries and currencies while having full access to your activity history.



## Retail

### One platform, complete visibility

With fully integrated Point of Sale and eCommerce modules, Pronto Xi provides a multichannel approach to retail that engages customers on their preferred mediums.

Create a secure yet simple shopping experience for your customers — on whatever device they use, wherever they are.

Manage warranty claims and repair requests with ease through the Repairs module.

Empower your staff to engage customers in-store with the Pronto POS App, or use it as your complete point-of-sale solution.



## B2B eCommerce

### Transforming your reach

Pronto Xi Avenue enables B2B organisations to rapidly extend the in-store experience to online while delivering omnichannel excellence.

When part of ERP and analytics software, Avenue seamlessly integrates with other powerful applications aligned to key aspects of the eCommerce experience. With a stunning and intuitive user interface, Avenue is a rapidly scalable platform that enables your business to deliver frictionless eCommerce, from browsing to purchasing.



## CRM

### The extra mile

Pronto Xi's fully responsive Customer Relationship Management (CRM) module allows you to maintain a powerful relationship with your customers, whether in the office or on the road.

The CRM makes it easy to manage the complete customer lifecycle, from the early beginnings of prospecting to the final sale and beyond. It also lets your sales teams to perform advanced segmentation for targeted and personalised customer communications.



## Supply Chain

### On time, every time

Track your current supply chain activity and forecast future movements by seamlessly coordinating and integrating your product, information and distribution network.

Automate supplier priorities, lead times and inventory targets to ensure supply always matches demand.

Maintain a paperless warehouse with state-of-the-art wireless functionality that lets you keep tabs on your sales and dispatch processes.

Optimise your supply chain planning with accurate, real-time inventory management and analysis designed to help you understand trends and reveal insights into your future demand.

Ensure optimum efficiency with an extended warehouse and inventory management system that supports the automatic allocation of incoming goods to locations, efficient picking, automatic replenishment, dispatch confirmation and location control of warehouse stock.



## Asset & Facility Management

### Simplified services

Manage your projects with a fully integrated project management solution. From the tender stage to project delivery, Pronto Xi's Project module manages resources, tasks and milestones so you can focus on the bigger picture.

Reduce asset failure rates and maintenance costs with Pronto Xi's Maintenance Management solution. Monitor detailed maintenance schedules to extend the life expectancy of your equipment, ensuring your assets are available for longer.



## Manufacturing

### Make more with less

Quality control is at the core of our flexible suite of manufacturing tools, from make-to-stock to configure-to-order. Whether your goal is trimming the fat on the factory floor or bulking up production volume, our manufacturing tools cater to almost any production technique. They're designed to ensure you run a tight ship.

Plan efficient production processes through detailed views of manufacturing resources and raw materials and get comprehensive feedback on consumption and production results.

View your entire operations at a glance and adjust production routing to maximise manufacturing resources. Gain a better understanding of how resource capacity impacts on your production requirements and reduce product cycle time to meet your deadlines.

Support continuous improvement and quality management through tighter process control to meet your certification requirements.

# Intelligence

## From a bird's-eye view to deep insights

Built on IBM Cognos technology, Business Intelligence (BI) puts powerful business insights at your fingertips. Combining dynamic key performance indicator (KPI) dashboards with the ability to create your own custom reports, BI digs deep into every aspect of your operations.

Customer expectations evolve quickly — so your business needs to be ready to adapt rapidly. “How did we get here?”, “What do we expect will happen next?” and “What key decisions do we need to make?” Business leaders need look beyond the current state of play and ask these types of questions to get ahead.

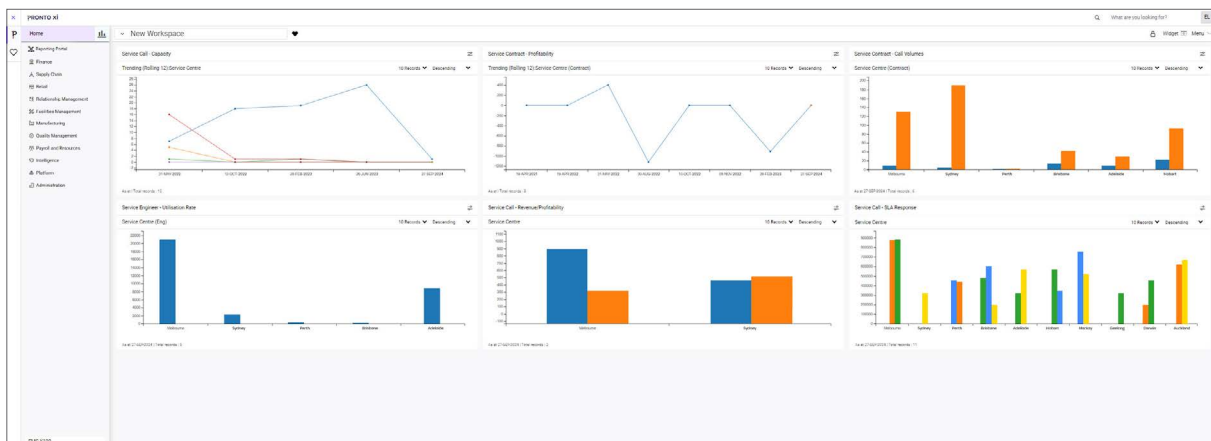
Analysts also need insights that will help them make more informed decisions tomorrow. The next generation of BI is fuelled by artificial intelligence (AI) and machine-learning capabilities that augment your ability to find insights in complex data.

IBM Cognos Analytics is now integrated with a powerful AI engine, IBM™ Watson™ technology\*, which provides data insights and automated data-cleansing, along with date-based forecasts to visualise business trends.

IBM Watson technology leverages the IBM Watson Natural Language Processing capability allowing its Conversation Assistant to provide deeper insights. IBM Watson Discovery helps you to better navigate the product through the Learn panel, while the Data Modules and Data Explorer tools enable greater collaboration and data-driven decision-making.

BI's user-friendly design means there are no barriers to retrieving the information you need.

By having the right insights available when you need them, you can make better decisions quickly and empower your staff to act based on real-time data.



Customise your workspace to get an overview of key information and metrics

\*IBM and Watson are trademarks of International Business Machines Corporation, and are registered in many jurisdictions



## Applications

### Unlock deeper insights

Business Intelligence is powered by IBM Cognos Analytics, making it an industry-leading Analytics platform.

Complementing IBM Cognos technology, we have developed a range of Pronto Xi applications to enhance your data analysis.

Our BI platform is available to all Pronto Xi customers and gives you access to better insights faster. Get out-of-the-box operational and financial reports or choose the integrated data model and easily build your own custom reports and dashboards.

In addition, IBM Cognos Mobile BI provides an interactive and secure environment for viewing and analysing data on compatible smart devices.



## Visualisations

### See between the lines

BI is packed with data visualisation tools, giving you a powerful overview of your business performance.

Stunning dashboards and KPI widgets are easy to create and customise.

Charts and reports are available as an “out-of-the-box” solution, or can be configured to suit your unique requirements. BI also offers a range of display options, so you can select the visualisation that allows you to demonstrate your data most effectively and share findings with others.



## Data

### **Better data, better decisions**

Behind Pronto Xi's rich visualisations, a vast amount of data drives the reports you can use to make daily decisions.

Whether you're accessing KPI snapshots via your workspace or building real-time reports from transactional data, Pronto Xi delivers the answers you seek.

In addition, Pronto Xi's Data Quality Management (DQM) solution means you can be confident in the quality of your data. This powerful tool safeguards your data's integrity through the periodic scanning of records, followed by user alerts and suggested actions.



# Web Interface

## Behind a desk or on the move? Pronto Xi offers a seamless user experience

User experience (UX) design is all about simplifying processes. Our deep research and knowledge of UX allowed us to design a user interface that optimises productivity and meets the needs of real-world users. Using modern web technologies, Pronto Xi delivers a fast and responsive web interface that's accessible no matter where you are, adapts well to different screen sizes and offers an intuitive approach to interaction design.

Navigating screens and menus, entering and viewing data, running reports, and configuring user preferences and favourites are straightforward processes. Data entry is also simple, whether using a keyboard and mouse or a touch-screen mobile device.

Regardless of which Pronto Xi modules you use, their consistent format and functionality make the tools quick and easy to learn.

### Highly accessible

Pronto Xi's web-based user interface is flexible. You can do what you need to do, whenever and wherever you need to do it, without installing software.

If you do need to use locally installed software or locally attached hardware peripherals, Pronto Xi has an optional local extension explicitly designed for this purpose, giving you the best of both worlds.

### Accelerate accuracy

Data entry validation happens in the field in real time and not once a form is submitted at the end of a task. This avoids lag time or the need for data re-entry, verifies that business processes are being followed, and helps your staff to complete their tasks as efficiently as possible.

**PRONTO Xi Employee Portal**

Search employees...   jamiet

#### My personal details

**Jonny DAINTON**  
Software Engineer

#### My current leave requests

Type	From	To	Status
Annual Leave	17/07/2024	17/07/2024	Approved

#### My team leave estimates (days)

Select date: 09/08/2024

Employee	Annual	Personal / Carers	Long service
Jane SMITH	168.63	219.71	52.08
Jack HANNAH	466.78	160.89	123.36
Callum Rivera	9.83	2.91	0.00

#### My to do list

Action	Description
Approve leave request	Annual Leave for Jane SMITH starting 02-OCT-2024 till 18-OCT
Approve leave request	Sick Leave for Callum Rivera starting 10-JUL-2024 till 11-JUL

#### My leave estimates (days)

Select date: 09/08/2024

Leave type	Estimated	Future
Annual	150.08	0.00
Personal / Carers	48.86	0.00
Long service	59.15	0.00

#### My team

Name	Position	Employment Class
Jane SMITH	Engineer	Full-Time
Jack HANNAH	Engineer	Full-Time
Callum Rivera	Engineer	Full-Time

#### My resource timesheets

Weekly timesheets

Date: 08/07/2024

Date	Normal	Overtime	Entries
Mon 08/07/2024	9.50	0.00	2
Tue 09/07/2024	7.50	0.00	1
Wed 10/07/2024	14.50	0.00	2
Thu 11/07/2024	4.00	0.00	1
Fri 12/07/2024	3.00	0.00	1
Sat 13/07/2024	0.00	0.00	0
Sun 14/07/2024	0.00	0.00	0
<b>Total</b>	<b>38.50</b>	<b>0.00</b>	

#### My emergency contact details

Name	Relationship	Mobile phone
Mary Dainton *	Spouse	0478 452 369

Primary contact is marked as \*

Maintain detailed staff information with the Employee Portal

# Pronto Software services

Get the most out of your Pronto Xi  
system with the support of our  
expert teams



From start to finish, our consulting team guides you through the implementation of your Pronto Xi system. Our consultants have a wide range of practical business experience across various technologies and industries, so you can be confident you're talking to someone in the know. Armed with the analytical skills that allow them to understand the nuances of your business properly, they're ready to help you adopt your new business management software and reveal what it can do for you.

We use our proven implementation framework to make sure your system is installed on time and on budget.

Before handing over the reins, we help you test your new system. Testing includes running business simulations to resolve potential issues, building bespoke user interfaces, and making necessary final amendments or customisations.

Finally, we're with you during the go-live process and will continue to be available until you're confident you've got full control.

## Implementation

### Getting things started

We have a tried-and-tested framework to ensure Pronto Xi is up and running as efficiently as possible. We call it the Pronto Implementation Methodology, or PIM. Over the years, PIM has been proven to make the implementation process easier and to drastically reduce the risks usually associated with business-critical projects. It's a powerful way to ensure your new Pronto Xi solution is delivered on time and within budget.

We start by working with you to establish a cooperative and controlled project charter. This plan helps us determine the correct timing and sequence of implementation processes, and lets you know when you can expect tasks to be completed.

We follow this up with detailed checklists to ensure tasks are carried out according to the project charter and monitor and track our progress through regular reporting.

## Training

### Empower your team

As part of the PIM process, we identify your training needs, based on the Pronto Xi modules to be installed, how they will be used and who will use them. Training continues to be available post-installation for new staff or for anyone needing to learn new modules or tools.

Training information — including sessions, dates, locations and registration requirements — is posted on our online knowledge base. Training courses are organised either in a classroom-based setting or on-site at your business.

## Customisations

### Ready for anything

We know that in business, there's no such thing as "one size fits all". Our team is always looking for new ways to adapt our product to best suit your business, and then deliver those enhancements as quickly as possible.

The architecture of Pronto Xi accommodates customised enhancements when you upgrade to new releases in the future.

## Ongoing support

### Always on hand

Throughout your Pronto Xi installation we offer comprehensive ongoing support, and we're always ready to listen and adjust to your needs. Our local support services include a dedicated help desk and online knowledge base, as well as fixes and workarounds for software issues.

Our team has practical experience across a range of industries, company roles and Pronto Xi modules. They've had careers as software users, accountants, warehouse managers, production managers, administrators and project managers and understand the challenges businesses face. In working through your support requirements, we will always connect you with a qualified consultant who understands your specific business needs and intricacies.

## Online help

### A wealth of knowledge

In addition to our dedicated help desk, we offer a range of online tools to help you quickly find answers to your questions.

Our web support resources — including news, user forums and handy hints — are continually updated, and you can find full product manuals, release notes and fixed-readiness information online, too.

Our forums give you access to a community of end users, developers and help desk staff, providing you with practical insight into our products and services.

If you need to contact us, you can log and track your service calls online. You'll be sent an email confirmation, including your call number, to follow progress in real time.

## Managed services

### Leave IT to us

Want more time to concentrate on your core business? Then let us take care of your IT system. Pronto Cloud provides custom service packages to manage, monitor and maintain your IT infrastructure.

With Pronto Xi on-premise, hosted or in the cloud, you gain enormous flexibility to modify or scale systems as you grow. Our solutions equip your company with the essential tools for doing business. And, with a simplified, easy-to-use IT setup, you can save on overheads, too.



## Enterprise security

### Secure your data

We offer a range of robust security features to give you the confidence that your business is protected.

Administrators can use roles and security profiles to control access from company level down to field level.

Pronto Xi's Identity and Access Management (IAM) solution integrates with Azure Active Directory and Okta, and enables SSO, MFA and self-serve password management for increased security and simplified user access.

HTTPS, digital certificates, reverse proxy servers, two-factor authentication and single tenant architecture are some of the other tools we use to keep Pronto Xi secure.

## Roadmap

### One step ahead

Our maintenance agreements give you access to Pronto Xi's future product upgrades, new features and enhancements.



## About us

# PRONTO

SOFTWARE

We are an Australian developer of award winning business management and analytics solutions. Pronto Xi, our Enterprise Resource Planning (ERP) software, integrates accounting, operational and mobile features in a single system – optimising business processes and unlocking actionable insights. That's why for more than 45 years, over 1,500 Australian and global organisations, across a wide range of industries, have trusted Pronto Xi to simplify their most complex challenges.

With headquarters and our Development Centre located in Melbourne, we have support offices and consultants based across Australia, as well as a global network of Resellers and Solution Partners. Specialised business units within Pronto Software have the expertise to assist you with pivotal technology – Digital Transformation with Pronto Woven, Cloud and Hosting services with Pronto Cloud and Business Intelligence solutions with Pronto iQ.

When you choose Pronto Software, you gain a team with deep industry experience, giving us the ability to understand your specific needs and build innovative solutions that drive business growth and revenue.

---

info@pronto.net  
1300 PRONTO (1300 77 66 86)

 pronto.net

 Pronto-Software

 ProntoSoftware