

PRONTO xi

Applications Overview



Shopfloor Manufacturing

Part of the Manufacturing application

Trademarks

Pronto Software, Pronto, Pronto Xi, the Pronto interrobang logo, the P interrobang logo, Pronto Woven, Pronto iQ and Pronto Cloud are all registered trademarks of Pronto Software Limited. All other marks are the property of their respective owners. Copyright © 2024 Pronto Software Limited (ABN 47001337248).

Disclaimer

This document contains statements related to our current and future developments that may constitute forward-looking statements. They are subject to changes and may be available in a Pronto Xi 780 service pack or future release of Pronto Xi. All diagrams, drawings, product screenshots and any other types of visualisations in this document, use demo or synthetic data created for display purposes only.

Contents

Shopfloor Manufacturing	5
Manufacturing workflow	6
Product data management	7
Bill of Materials	8
Shopfloor processes	14
Manufacturing processes	15
Quality control	15
Costing and General Ledger posting	15



Shopfloor Manufacturing

Whether you want to go lean or are looking to bulk up high-volume output, Shopfloor Manufacturing keeps your manufacturing operations shipshape



Shopfloor Manufacturing is a highly flexible solution that includes a sub module called Manufacturing Planning. Together, these modules streamline your:

- **Product data management** — Manage item control, single and multiple bills of materials (BOMs), routing, work centres, product configurator and kitting
- **Shopfloor control** — Organise work orders, production feedback, alternative routings, subcontract operations, costing and General Ledger posting
- **Manufacturing processes** — Workflow make to stock, repetitive, batch, make to order, assemble to order, configure to order and engineer to order
- **Planning** — Plan materials, capacity, exception reporting, subcontracting, sales and operations planning, planning BOMs, super bills and rough-cut capacity planning
- **Quality control** — Check traceability by lot, batch and serial number
- **Costing** — Allocate costs for standard, average, actual, first-in, first-out (FIFO) and more

Manufacturing workflow

Shopfloor Manufacturing easily adapts to different production environments. Its Master Production Scheduling (MPS), Material Requirements Planning (MRP) and Capacity Requirements Planning (CRP) tools — as well as sales and operations planning using planning BOMs and super bills — all support make-to-stock operations.

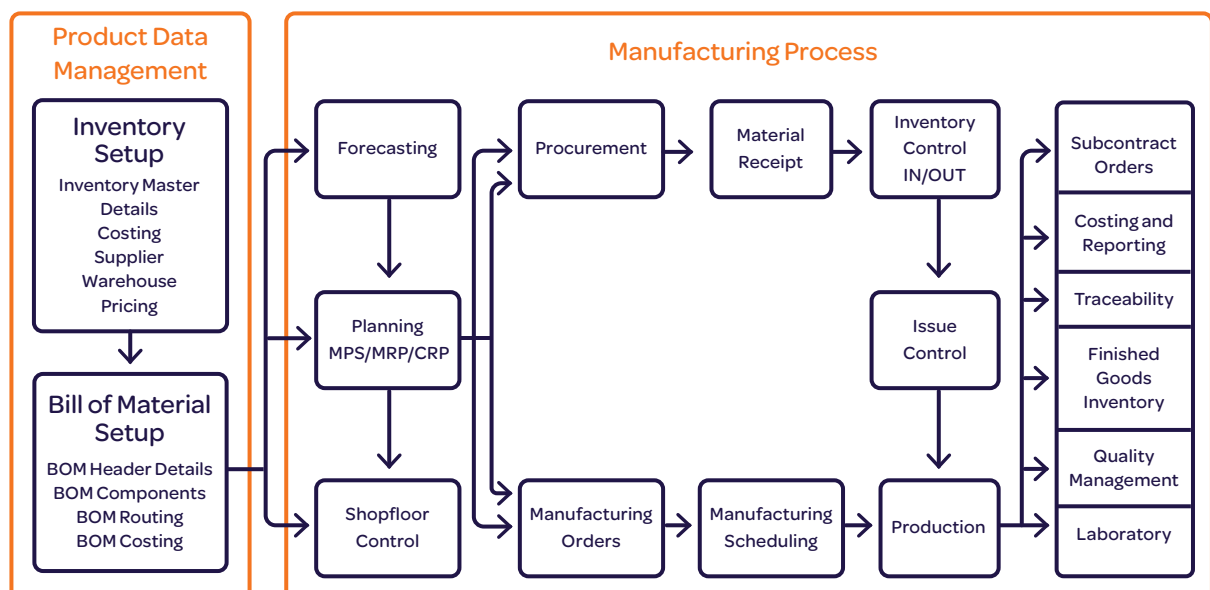
Control production with or without work orders to support lean manufacturing processes. Organise raw materials use through traditional stock-issue functions, automatic backflushing of materials, or a combination of both.

Capture real-time production results using barcode readers, radio frequency (RF) units, or desktop computers. Multi-level batch, lot and serial number tracking are fully supported throughout the entire system, and so is external time and attendance-model integration.

Pronto Xi supports sales order kitting and the manufacturing of kit items and offers a powerful configurator module. It supports all your make-to-stock, make-to-order, assemble-to-order and mass customisation operations. Choose kit items from a predefined list, then ship them as a kit or as an assembled product.

Work Or...	Warehouse	Item Code	Item Description	Status	Priority	Factory Warehouse	Unit...	Ordered	Completed	Qty QC
9	Melbourne FG Warehouse	PHARMA-2	Lot Tracked	Complete Updated		Factory3	EACH	500.0000	500.0000	0.0000
11	Melbourne FG Warehouse	PHARMA-2	Lot Tracked	Cancelled		Factory3	EACH	500.0000	0.0000	0.0000
12	Vic Service Warehouse	PHARMA-2	Lot Tracked	Complete Updated		Factory3	EACH	500.0000	500.0000	0.0000
100000	Work In Process Warehouse 1	ACWIRE	Annealed Copper Wire	In Progress		Factory1	M	5000.0000	2.0000	0.0000
100001	Work In Process Warehouse 1	BCWIRE	Bare Copper Wire (2mm dia.)	Committed		Factory1	M	5000000.0000	0.0000	0.0000
100002	Work In Process Warehouse 1	BCWIRE	Bare Copper Wire (2mm dia.)	Committed	A	Factory1	M	5000.0000	0.0000	0.0000
100004	Work In Process Warehouse 1	ACWIRE	Annealed Copper Wire	Cancelled		Factory1	M	5000.0000	0.0000	0.0000
100005	Work In Process Warehouse 1	ACWIRE	Annealed Copper Wire	Cancelled		Factory1	M	5000.0000	0.0000	0.0000
100006	Work In Process Warehouse 1	ACWIRE	Annealed Copper Wire	Cancelled		Factory1	M	5000.0000	0.0000	0.0000
100007	Work In Process Warehouse 1	ACWIRE	Annealed Copper Wire	Cancelled		Factory1	M	5000.0000	0.0000	0.0000
100008	Vic Service Warehouse	ASSEMBLYM8	Final Assembly M8	Cancelled		Factory1	EACH	100.0000	0.0000	0.0000
100009	Vic Service Warehouse	ASSEMBLYM8	Final Assembly M8	Complete Updated		Factory1	EACH	100.0000	100.0000	0.0000
100010	Vic Service Warehouse	ASSEMBLYM8	Final Assembly M8	In Progress		Factory1	EACH	100.0000	0.0000	0.0000
100011	Vic Service Warehouse	SERIALMANU	Serial Manufactured	Complete Updated		Factory1	EACH	15.0000	15.0000	0.0000
100012	Vic Service Warehouse	SERIALMANU	Serial Manufactured	Cancelled		Factory1	EACH	10.0000	10.0000	0.0000
100013	Vic Service Warehouse	SERIALMANU	Serial Manufactured	In Progress		Factory1	EACH	100.0000	99.0000	1.0000
100014	Vic Service Warehouse	10000	Cola 375ml	Firm Planned		Factory1	EACH	1.0000	0.0000	0.0000
500000	Work In Process Warehouse 2	BSTRCOND	Bare Stranded Conductor	In Progress		Factory 2	M	100.0000	10.0000	0.0000
500001	Raw Material Warehouse 2	BSTRCOND	Bare Stranded Conductor	Committed		Factory 2	M	10.0000	0.0000	0.0000
500002	Work In Process Warehouse 2	BSTRCOND	Bare Stranded Conductor	In Progress		Factory 2	M	10.0000	0.0000	0.0000

Manage work orders in one convenient location



A manufacturing workflow

PRONTO XI

What are you looking for? RJ

Manufacturing

Work Orders

Bill of Materials

Production Feedback

Quick Production Entry

Production Update

Job Card Print

MANU Reports

Schedules and Documents

Production Dockets

Planning

Enquiries

Maintenance

Configuration

INV M151

No description **ASSEMBLYM8 (16)**

Bill of Materials

Find Search Entry Correct Detail Remove Actions

Standard 20 rows

Item Code	Item Description	Factory C...	Factory Description	Type	BOM Description	Status	Lot Size	M...	Low Level
ASSEMBLYM8	Final Assembly M8	FCT2	Factory 2	Primary		Active	1.0000	Y	
BCWIRE	Bare Copper Wire (2mm dia.)	FCT1	Factory1	Primary	Bare Copper wire (2mm)	Active	5000.0000	N	
BOLTPLATE	Bolted Steel Plate	FCT2	Factory 2	Primary		Active	1.0000	Y	
BSTROCOND	Bare Stranded Conductor	FCT2	Factory 2	Primary	Bare Stranded conductor	Active	100.0000	N	
COMBO01810A	Combo - Bulla NDP 4 SKU's			Primary		Active	1.0000	N	
COUCHKIT	Our couch and cushions			Primary		Active	1.0000	N	
KIT	HFLUX KIT			Primary		Active	1.0000	N	
KITACC	Test Kits in POS App			Primary		Active	1.0000	N	
MRPWITEST	W1 Planning Test			Primary		Active	1.0000	N	
PECKKIT	Peckish Kit			Primary		Active	1.0000	N	
PHANTOM1	Phantom Manufactured 1	FCT2	Factory 2	Primary		Active	1.0000	Y	
PHANTOM2	Phantom Manufactured 2	FCT2	Factory 2	Primary		Active	1.0000	Y	
PHARMA-1	Consignment Product	FCT3	Factory3	Alternate		Active	100.0000	N	
PHARMA-1	Consignment Product	FCT3	Factory3	Primary		Active	100.0000	N	
PHARMA-2	Lot Tracked	FCT3	Factory3	Primary		Active	100.0000	Y	
PLF1	Pauls Test			Primary		Active	1.0000	N	
SERIALMANU	Serial Manufactured	FCT1	Factory1	Primary		Active	1.0000	Y	
SERIALMANU	Serial Manufactured	FCT1	Factory1	Alternate	Test MRP	Active	1.0000	N	

First Page Up Up Down Page Down Last

Centrally manage your bill of materials (BOM)

Product data management

Control a manufacturing system by the characteristics of the individual item master and its associated records. Set items as "normal" saleable inventory, manufactured products, raw material (not for resale), kits, labour, special or indent.

Planning parameters determine the replenishment algorithms for the MRP or reorder system, and minimum inventory settings provide separate replenishment levels by the warehouse.

Perform product life-cycle management through a number of condition flags and time periods, and control items via lot, batch and serial number tracking.

You can also capture crucial information, such as export details, chemical or hazchem classification, and production drawings (references).

Bill of Materials

Bill of Materials (BOM) supports up to 50 levels of sub-assembly bill structures required to produce the parent assembly. It also displays the quantities of each item, and manages costs, work centres and routing processes by warehouse.

The screenshot displays the 'BOM Header Information' screen in the Pronto Xi system. The interface is divided into a sidebar on the left and a main content area. The sidebar contains navigation links for Manufacturing, Work Orders, Bill of Materials, Production Feedback, Quick Production Entry, Production Update, Job Card Print, MANU Reports, Schedules and Documents, Production Dockets, Planning, Enquiries, Maintenance, and Configuration. The main content area is titled 'BOM Header Information' for 'ASSEMBLYM8 (16)'. It includes tabs for BOM Header Information, Components, Engineering Detail, Exploded, Routing Details, Notes, Work Orders, Current Sales Lines, History Sales Lines, Parent BOMs, and Audit. The 'BOM Header Information' tab is active, showing fields for Item Code (ASSEMBLYM8), Item Description (Final Assembly M8), and a 'Manufactured' status. Below this are 'Planning Details' (Planning Group, Authorised, Authorised Start/End, Revision Code, Version Code, Drawing Reference) and 'Other Details' (Status, Last Change, Lot Size, Formulation Quantity, Yield %, MPS Item, Cumulative Lead Time, Comments). To the right are 'BOM Details' (BOM Description, BOM ID, Factory Code, Type) and 'Routing' (Default Route ID, Code, Description). At the bottom, there are tables for 'Costs (Per 1 EACH)' showing Assembly Costs, Sub Assembly Costs, and Fixed Costs.

Get a high-level view of BOM data and access detailed information if needed

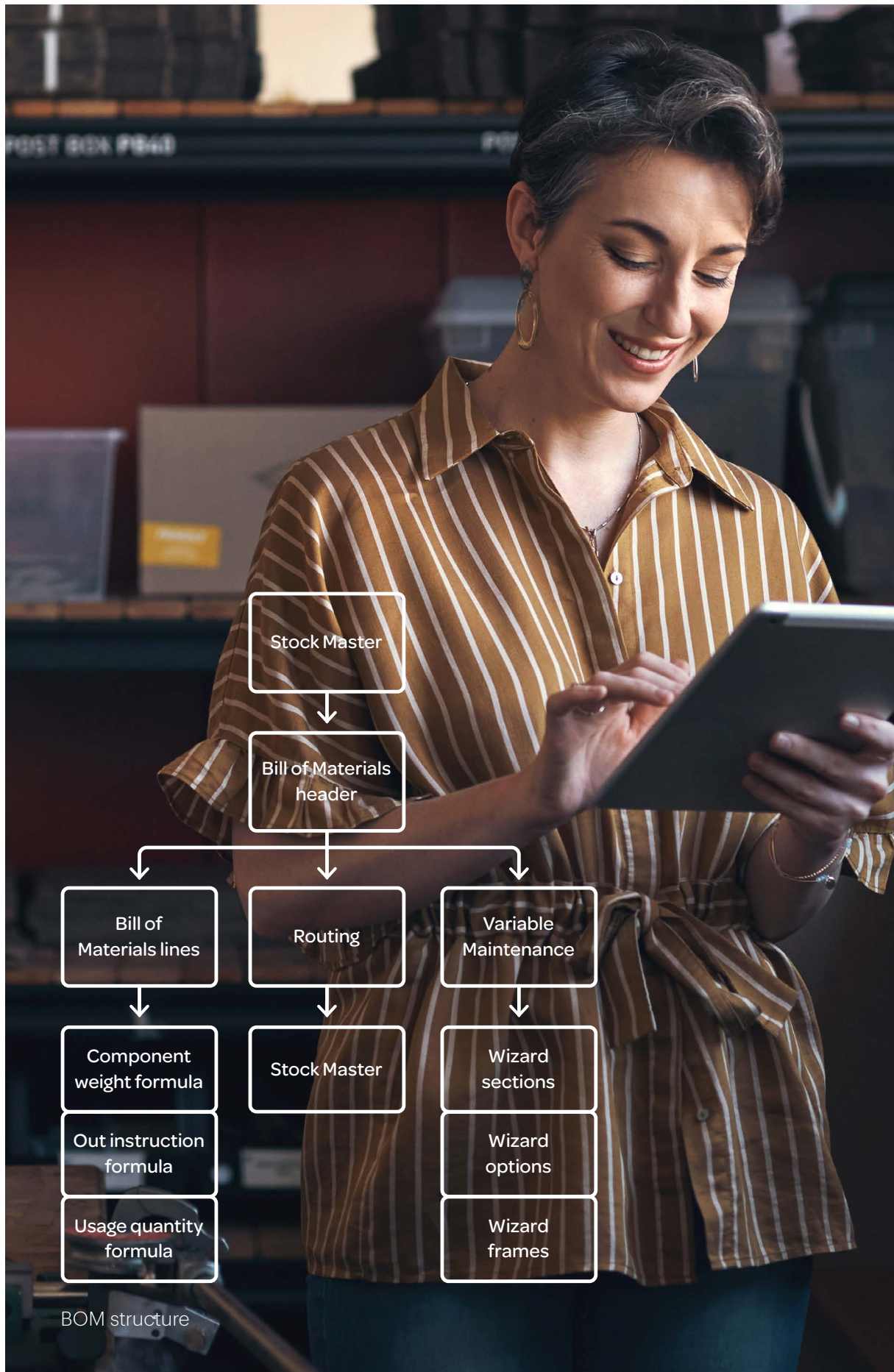
Build different types of bills to meet product life cycles — from planning and configured to super bills — and manage every variation of configurable products in make-to-order, assemble-to-order or engineer-to-order environments.

Create and store versions of the same bill for multiple factories, and different types of store versions. Manage bills through BOM-effective date, version control, engineering change order (ECO) or user-controlled flags. Pronto Xi also handles designators, split fills, calculated component quantities and other industry-specific solutions.

A BOM can be costed in different ways, including standard cost, average cost, FIFO and at warehouse level. For added flexibility, you can vary the costing methods for different items; for example, set a standard cost for a stock item or set FIFO or average cost for a warehouse item.

In addition, you can add fixed or average costs (such as overhead operating costs) per unit, improving the accuracy of the true BOM cost.

In multi-factory manufacturing operations, Pronto Xi delivers BOM cost rollup by the production factory. Where the same BOM exists across multiple factories, a cost-simulation feature uses source warehouse mapping to ensure the information for each factory is as accurate as possible.



Routing, operations and work centres

These are the sequential steps, operations, equipment, setup and run times required to make a particular product. Together with the associated labour and overhead costs, this information is used to support:

- discrete manufacturing
- rate-based production
- parallel routing
- multiple cavity tooling

- alternative routing streams
- subcontracting operations

If production capacity reporting is not required, record labour and overhead costs using Labour and Special Items rather than Pronto Xi routing.

You can maintain BOMs and routings separately and easily define or change component information for bills or operation details. Create a new BOM or routing, or modify an existing version. Revisions are time-stamped, so you can determine the latest version if multiple revisions occur on the same date.

PRONTO xi | What are you looking for? | RJ

Route Maintenance | Route ID: 5

Route Code: EXTRACT | Description: | Route ID: 5 | Factory: FCT3 - Factory3 | Route Group: | Lot Size: 1.0000

Routing Information

Seq	Pr	N	Code	Operations Description	U.	Main Centre	Qty Per	Setup Mach	Setup Labour	Run Machine	Run Labour	Cleanup Ma	Cleanup La	Start Date
10		20	EXT	Extraction of Chemicals	HRS	MIXER	100.0	0.2500	0.2500	1.0000	1.0000	0.5000	0.5000	25-NOV-2019
20		30	MIX	Mix of Chemicals	HRS	MIXER	100.0	0.2500	0.2500	1.0000	1.0000	0.5000	0.5000	25-NOV-2019
30			PACK	Pack of Chemicals	HRS	MIXER	100.0	0.2500	0.2500	0.7500	0.7500	0.0000	0.0000	25-NOV-2019

Sequencing & Operation

Alt: | Sequence: 10 | Prev Seq: 0 | Next Seq: 20 | Operation: EXT - Extraction of Chemicals | Time Unit: HRS | Main Work Centre: MIXER - Mix, Extract and Pack machine | Quantity Produced Per Specified Cycle Time: 100.0

Timing & Effective Dates

Setup Machine: 0.2500 HRS | Setup Labour: 0.2500 HRS | Run Machine: 1.0000 HRS | Run Labour: 1.0000 HRS | Cleanup Machine: 0.5000 HRS | Cleanup Labour: 0.5000 HRS | Start Date: 25-NOV-2019 | End Date: 06-JUN-2019 | Tool No: |

Post Operation & Alternate Routing

Drying Time: 0.0000 HRS | Move Time: 0.0000 HRS | Alternate Work Centre: DRAWING - Wire Drawing Machine | Alt. Run Time: 1.0000 HRS | Multiplier: 1.000 | CRP Min. Time: 0.0000 HRS | Comment: |

First | Page Up | Up | Down | Page Down | Last

Get route planning and set-up information at your fingertips

PRONTO xi | What are you looking for? | RJ

Production Operations Maintenance

Select | Find | Entry | Correct | Remove | Notes | Update Routes | Update All Notes | Production Rate

Standard | 11 rows

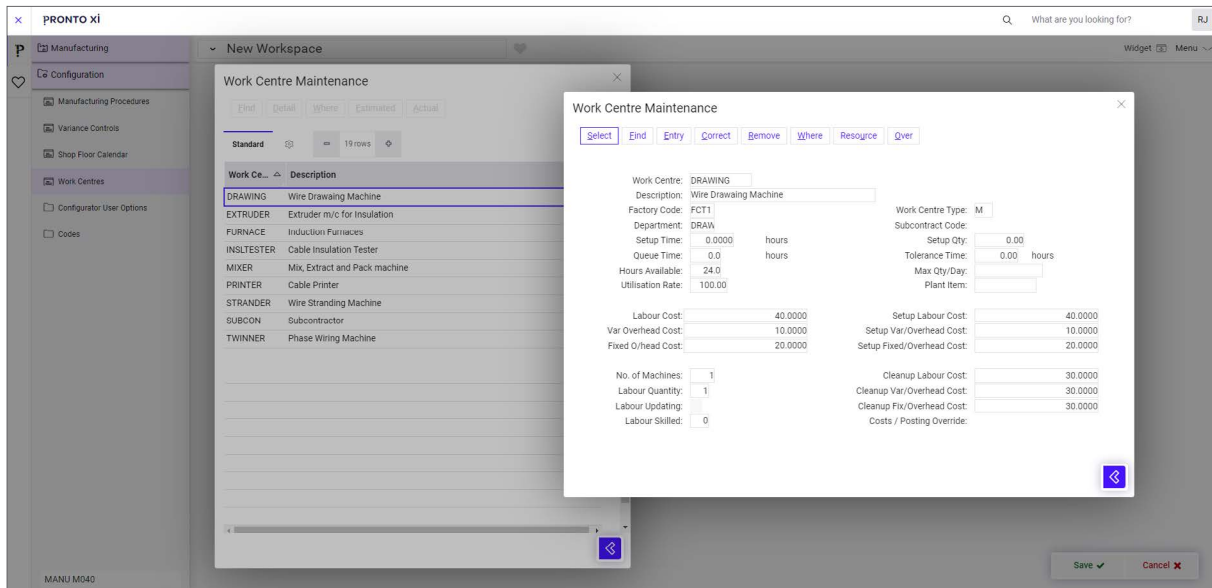
Op	Operations Description	U.	Qty Per	Setup Machine	Setup Labour	Run Machine	Run Labour	Tool Ref	Cleanup Machine	Cleanup Labour	Drying	Mov
ANNL	Annealing	SET	1.0000	0.000	0.000	0.000	0.000		0.000	0.000	0.0000	0.00
DRAW	Drawing	ML	1.0000	0.000	0.000	0.000	0.000		0.000	0.000	0.0000	0.00
EXT	Extraction of Chemicals	HRS	100.0000	0.250	0.250	1.000	1.000		0.500	0.500	0.0000	0.00
EXTR	Extruder	ML	1.0000	0.000	0.000	0.000	0.000		0.000	0.000	0.0000	0.00
MIX	Mix of Chemicals	HRS	100.0000	0.167	0.167	0.500	0.500		0.500	0.500	0.0000	0.00
PACK	Pack of Chemicals	HRS	100.0000	0.250	0.250	0.750	0.750		0.000	0.000	0.0000	0.00
PRNT	Cable Printing	ML	1.0000	0.000	0.000	0.000	0.000		0.000	0.000	0.0000	0.00
STRN	STRANDING	ML	1.0000	0.000	0.000	0.000	0.000		0.000	0.000	0.0000	0.00
SUBC	Subcontractor Operation	HRS	1.0000	0.000	0.000	0.000	0.000		0.000	0.000	0.0000	0.00
TWIN	Twinning	ML	1.0000	0.000	0.000	0.000	0.000		0.000	0.000	0.0000	0.00
VOLT	Insulation Check	ML	1.0000	0.000	0.000	0.000	0.000		0.000	0.000	0.0000	0.00

Production Operation Details

Operation Code: ANNL | Operation Desc: Annealing | Unit: SET | Qty Per: 1.0000 | Setup Machine: 0.000 HRS | Setup Labour: 0.000 HRS | Run Machine: 0.000 HRS | Run Labour: 0.000 HRS | Cleanup Machine: 0.0000 HRS | Cleanup Labour: 0.0000 HRS | Tool No.: | Drying Time: 0.0000 HRS | Move Time: 0.0000 HRS | Overlap: 0.0000 HRS

First | Page Up | Up | Down | Page Down | Last

Review detailed operations information for planning



Setup unique work centre costings and parameters

Exploded BOM view

A data grid view of exploded BOMs is available from the Product Data Management menu.

This view shows details across all levels of sub-assembly components, making it easier to filter and sort your BOMs.

Product configuration

Shopfloor Manufacturing provides powerful configuration and kitting features to support make-to-order, assemble-to-order and engineer-to-order industries. Quickly implement straightforward features and option scenarios through a kit BOM.

The Sales Configurator equips sales personnel with an easy-to-use, wizard-based interface to step the user through item configuration, BOM creation and quoting.

The Sales Configurator acts as a virtual salesperson, enabling users to build a tailored solution based on the components and characteristics defined within the configurable BOM. The outcome of this process is the generation of a sales order or quotation order. The Sales Configurator also allows you to create unlimited BOM variations based on a generic BOM, which is a master bill (or master recipe). It's designed for every possible permutation of an item, with built-in constraints for product and manufacturing processes.

When issuing a quotation for a configured item, you can build the item up-front or upon customer acceptance of the quotation. This reduces the need to manage the life cycle of many discrete inventory items if the quotation is rejected.

The Sales Configurator includes tools to calculate materials usage and production times, including setup, costs and prices. Because relationships between various parameters are typically linear and arithmetic, use lookup tables to provide links for any unique parameter relationships, taking away the complexity found in more traditional item configuration processes. Reduce the likelihood of error by navigating through a series of radio buttons designed to prompt users for a single response to predefined variables. Easily visualise each configuration component by using the free space in the wizard screens to display images throughout the stages of configuration.

PRONTO xl

What are you looking for? RJ

Manufacturing

Maintenance

Route Maintenance

Planning BOM Maintenance

Co-Products Maintenance

Fast Item Maintenance (inc BOM)

Tool Register Maintenance

Lot Batch Number Maintenance

Replenishment Override Maintenance

BOM Cost Rollup

Engineering Changes

Sales Configurator

Just in Time (JIT)

Housekeeping

Order Scheduling

Bulk Tools

Manufacturing Suppliers

Multiple Formula Based Configurator Maintenance

MANU M072

Global Variable Maintenance

Find Entry Correct Remove Value Maint

Standard 13 rows

Se...	Variable	Description	Type	Adjust	Appe...	Gen Seq	Table...	Minimum	Maximum	Value	Unit	Keywords	Key
0.0	COLOUR	Colour	TA		C			0.00	0.00	RED			
0.0	D1	Depth 1	N	N				1.00	2700.00	1			
0.0	DEPTH	Depth	N	Y				1.00	2.00	1			
0.0	C.VAR1	Global variable 1	A					0.00	0.00	EYE			
0.0	L1	Length 1	N	N	1			80.00	2700.00	1300			
0.0	LENGTH	Length	N	Y				10.00	50.00	10			
0.0	NUM_LAPS	No. of Laps	N	Y				1.00	5.00	2			
0.0	WIDTH	Width	N	Y				10.00	30.00	10			

First Page Up Up Down Page Down Last

Create BOMS on the fly with the Sales Configurator

The Sales Configurator seamlessly links to the Project module, allowing users to create projects and attach configured BOMs.

Offering in-built flexibility and oversight of process stages, Project achieves best practice within the industry. Create orders from Manufacturing, Sales Configurator or general bill of materials, or simply raise general material requisitions or purchase orders.

Engineer to Order (ETO) applies individual engineering design or significant customisation to satisfy a customer's unique specification. As an integrated solution, Project can take on most ETO requirements, including the costing and tracking all transactions necessary to complete ETO work.

PRONTO xl

What are you looking for? RJ

Manufacturing

Work Orders

Bill of Materials

Production Feedback

Quick Production Entry

Production Update

Job Card Print

MANU Reports

Schedules and Documents

Production Dockets

Planning

Enquiries

Maintenance

Configuration

MANU M080

1720

Production Feedback

Find Entry Correct Remove Detail Docket Update

Standard 20 rows

Transact...	Transaction Type	Employee Name	Work Cent...	WO/ref	Item Code	Item Description	Finished Warehouse	Component Warehouse
22-MAR-2022	NP - Non-wo Production Qty	L11	NEW	1720	MC-REGL	Mikes Regression Lot Tracked		Raw Materials
23-MAR-2022	NP - Non-wo Production Qty			1728	MC-REGL	Mikes Regression Lot Tracked	Melbourne Main Warehouse	Raw Materials
23-MAR-2022	NP - Non-wo Production Qty		NEW	1729	MC-REGL	Mikes Regression Lot Tracked	Melbourne Main Warehouse	Raw Materials
23-MAR-2022	NP - Non-wo Production Qty			1730	MC-REGL	Mikes Regression Lot Tracked	Melbourne Main Warehouse	Raw Materials
23-MAR-2022	NS - Non-wo Production (Scr...			1727	MC-REGL	Mikes Regression Lot Tracked	Melbourne Main Warehouse	Raw Materials
29-MAR-2022	P - Production Qty	BRAIN		AA887	BEAD-M01	Bead Manufactured Item	Melbourne Main Warehouse	Raw Materials
31-MAR-2022	P - Production Qty	Able Dean	180	AA887	BEAD-M01	Bead Manufactured Item	Melbourne Main Warehouse	Raw Materials
07-APR-2022	SD - Start of day	Dart Simon						
07-APR-2022	SW - Start of Work	Dart Simon	ASSY	AA910	BEAD-GADGET	A manufactured gadget	Melbourne Main Warehouse	Raw Materials
11-APR-2022	P - Production Qty	Able Dean	180				Melbourne Main Warehouse	Raw Materials
11-APR-2022	P - Production Qty	Able Dean	180				Melbourne Main Warehouse	Raw Materials
11-APR-2022	P - Production Qty	Able Dean	69				Melbourne Main Warehouse	Raw Materials
12-APR-2022	P - Production Qty	Dart Simon	69				Melbourne Main Warehouse	Raw Materials
22-APR-2022	SD - Start of day	Able Dean						
27-APR-2022	P - Production Qty		180				Melbourne Main Warehouse	Raw Materials
03-MAY-2022	P - Production Qty		ASSY	AA918	BEAD-GADGET	A manufactured gadget	Melbourne Main Warehouse	Raw Materials
03-MAY-2022	P - Production Qty	Dart Simon	ASSY	AA918	BEAD-GADGET	A manufactured gadget	Melbourne Main Warehouse	Raw Materials
03-MAY-2022	P - Production Qty		180	AA918	BEAD-GADGET	A manufactured gadget	Melbourne Main Warehouse	Raw Materials

First Page Up Up Down Page Down Last

Easy-to-use data grids for production feedback



Shopfloor processes

Work orders

Work orders are typically used to manage the planning, execution, consumption of raw materials and feedback on production results.

In a lean manufacturing environment, Pronto Xi offers orderless and paperless production recording, using back-flush methods for raw materials consumption and progressive crediting of labour and overhead "hours earned".

Special work order types and processes are available for disassembly-type industries and other special operations such as rework and repack.

Production feedback

Shopfloor Manufacturing allows you to enter production feedback results on desktop or mobile.

The web-based application's responsive interface means shopfloor managers can enter product results on the go using a mobile device.

Back-office users can also enter production results in several ways, including bulk entering of production feedback.

Quick production entry screens allow users to copy and paste from external applications.

Alternative routing

Shopfloor Manufacturing allows you to select a specific route from a predefined range on the day of actual production.

You can change the route ID against an open work order, whether it's at "firm planned" or "committed" status. This provides greater flexibility if you need to quickly change individual work orders before production commences.

Lot, batch and serial number tracking are supported for finished goods, as well as for components or raw materials.

Subcontracting

With Shopfloor Manufacturing's subcontracting functionality, you can raise purchase orders at various times throughout the work order's life cycle.

Control the completion of a subcontractor process using standard purchasing goods receipt or work order production entry.

Shopfloor Manufacturing fully preserves the integrity of stock control of goods produced and payment for subcontracting services, without double-handling or creating dummy items.



Manufacturing processes

Shopfloor Manufacturing supports a range of processes that make it easy to manage your make-to-stock, repetitive and batch-production functions, which together form a vital hub of supply chain management.

These processes include:

- materials planning via forecasting
- sales orders and stock replenishment policies
- automatic creation of work orders and purchase orders
- initiation of subcontract operations
- creation of vendor schedules
- capacity planning of actual production
- release of shopfloor documentation
- reporting of production results

The module supports discrete manufacturing, rate-based production, parallel routing, multiple cavity tooling, alternative routing streams and subcontract operations.

Other standard features include make-to-order, assemble-to-order, configure-to-order and engineer-to-order manufacturing.

Quality control

Traceability

Shopfloor Manufacturing includes an extensive range of traceability tools.

Track manufactured goods and purchased raw materials by manufacturing batch or lot.

Or, lot-track raw materials and components by purchase order number if required.

You can also record and track serial-numbered items at various user-controlled transaction points.

Quality assurance

Nominate purchased or manufactured items for quality assurance (QA) inspection before they are formally accepted as saleable items. Following QA inspection, items can be fully or partially accepted, rejected or returned.

Use-by-date

In many process industries, shelf-life is important. Pronto Xi automatically generates use-by dates for product labels and other documentation.

Costing and General Ledger posting

You can control cost calculations and postings to the General Ledger in a number of ways. Generate costs from standard costs, single and multiple BOMs, and routings. Alternatively, costs can be generated from actual labour and machine time reports, actual cash costs posted to the work order, or timesheet records.

Set up your General Ledger account structure to attribute costs and variances to a factory, department, item group or work centre. Users can handle any updates to product costs and inventory according to the system cost they select.

In addition, link manufacturing modules to Payroll by recording the times from the work order against the employee code.

About us

PRONTO

SOFTWARE

We are an Australian developer of award winning business management and analytics solutions. Pronto Xi, our Enterprise Resource Planning (ERP) software, integrates accounting, operational and mobile features in a single system – optimising business processes and unlocking actionable insights. That's why for more than 45 years, over 1,500 Australian and global organisations, across a wide range of industries, have trusted Pronto Xi to simplify their most complex challenges.

With headquarters and our Development Centre located in Melbourne, we have support offices and consultants based across Australia, as well as a global network of Resellers and Solution Partners. Specialised business units within Pronto Software have the expertise to assist you with pivotal technology – Digital Transformation with Pronto Woven, Cloud and Hosting services with Pronto Cloud and Business Intelligence solutions with Pronto iQ.

When you choose Pronto Software, you gain a team with deep industry experience, giving us the ability to understand your specific needs and build innovative solutions that drive business growth and revenue.

info@pronto.net
1300 PRONTO (1300 77 66 86)

 pronto.net

 Pronto-Software

 ProntoSoftware