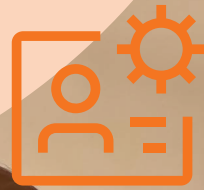


PRONTO xi

Applications Overview



Resource Management

Part of the Payroll & Resources
application

Trademarks

Pronto Software, Pronto, Pronto Xi, the Pronto interrobang logo, the P interrobang logo, Pronto Woven, Pronto iQ and Pronto Cloud are all registered trademarks of Pronto Software Limited. All other marks are the property of their respective owners. Copyright © 2024 Pronto Software Limited (ABN 47001337248).

Disclaimer

This document contains statements related to our current and future developments that may constitute forward-looking statements. They are subject to changes and may be available in a Pronto Xi 780 service pack or future release of Pronto Xi. All diagrams, drawings, product screenshots and any other types of visualisations in this document, use demo or synthetic data created for display purposes only.

Contents

Resource Management	4
Resource master	4
Work cycles	5
Rosters	5
Time interpretation	5
Timesheets	5
Attributes	5
Notifications	5
Pronto Xi module integration	6

Resource Management

Plan and manage human and equipment resource requirements with Resource Management



Pronto Xi's Resource Management integrates Payroll and Facilities Management modules, allowing you to comprehensively plan and manage resources.

Key features include:

- resource attribute definition
- work cycles
- rosters
- time interpretation rules
- timesheet entries
- notifications

When used in conjunction with Resource Scheduler, Resource Management simplifies the process of scheduling resources and equipment across different Pronto Xi modules, providing you with real-time visibility into current resource allocations and giving you access to tools like Planner and Map view.

Resource master

A resource comes in the form of personnel, subcontractors or equipment. The Resource Management module connects these resources to various modules within Pronto Xi and interacts with modules like Payroll, Service, Project, Maintenance Management and Plant Maintenance. By establishing links between the modules, you access valuable information about resources across different areas of operation.

Resource management focuses on understanding the availability of resources, whether they meet job requirements and how effectively they are utilised. You can also define important attributes for each resource.

Work cycles

A work cycle is a period in a posted work schedule starting when the cycle begins and ending when it begins to repeat itself. The cycle may span days or weeks or a part of a day or week. You can also define a work cycle as a regular or irregular pattern, allowing you to accommodate any cycle pattern. In addition, it can define the available and scheduled time for a linked resource.

A default location also determines the global unavailability of resources for events such as public holidays or shut-down periods.

Rosters

A resource roster allows you to define the positions required to fulfil a roster, which ensures the resource has the required position qualifications to be assigned.

Rosters coincide with work cycles to determine resource availability. You can also set budgets for each roster and compare these to actual rostered costs, which offers full visibility and control.

Time interpretation

Resource Management can establish time interpretation rules showcasing a detailed breakdown of hours worked. This process involves categorising the total time worked into defined time buckets, representing normal and overtime components for a resource. Additionally, configure categories to include allowances for paid and unpaid breaks, start and finish times, and applicable allowances. An automatic allowance feature analyses work time components and applies relevant allowances based on predefined rules.

Pronto Xi's time interpretation rules are user-defined and flexible enough to handle the most demanding employment conditions.

Timesheets

Enter timesheets against a resource and analyse using the time interpretation rules to ensure your employees receive the correct pay.

You can also generate and automatically populate timesheets based on a resource's work cycle or roster, enabling managers to gain greater efficiencies.

Attributes

Attributes are user-defined characteristics that can be applied to your resources. Attributes help you understand what licenses or qualifications are available for a resource, and define insurance for subcontractors, load restrictions for equipment, and customer or equipment requirements. For example, you can state that a resource requires certain inductions for a specific customer.

Notifications

Resources accept or decline work orders, project tasks or rosters via email without logging into Pronto Xi. This means resources do not need to be set up or trained as Pronto Xi users, simplifying the workflow, reducing costs and making it easier to onboard a new resource.

Pronto Xi module integration

Resource Management integrates into the following Pronto Xi modules, highlighting the additional power it can provide to your business operations.

Payroll

Linking a resource to payroll allows you to apply a work cycle and use it with a leave request to determine the number of days or hours to be paid. In addition, by defining time interpretation rules, you can create timesheets and break them into time buckets for simplified payroll processing. Time interpretation rules automatically create allowances based on specific conditions to assist payroll processing further.

Time and attendance

Resource Management integrates with our partner, Bundy Plus. With this solution, time and attendance timesheets flow into Resource Management for time interpretation, which then flows through to Payroll to pay employee.

Facilities Management (Service, Project and Maintenance Management)

Connecting a resource to an engineer or project enables you to implement a work cycle that assigns calls or tasks to a resource. When assigning an event to your resource, you can instantly check availability, assuring you that they can complete the work. If the resource is also associated with a payroll record, any leave requests update the resource's availability, providing you with a comprehensive view of their schedule.

The facilities modules also use attribute hierarchies that you can configure to suggest suitable resources for the job. For example, a customer may have specific requirements for indications, or the equipment being serviced may demand particular skills. These attributes are automatically applied to all requirements so when you review a list of available resources for the job, only those matching the criteria are displayed.

Connecting a resource to a plant item can also trigger automatic unavailability if the plant item is being serviced via the Maintenance Management module.





About us

PRONTO

SOFTWARE

We are an Australian developer of award winning business management and analytics solutions. Pronto Xi, our Enterprise Resource Planning (ERP) software, integrates accounting, operational and mobile features in a single system – optimising business processes and unlocking actionable insights. That's why for more than 45 years, over 1,500 Australian and global organisations, across a wide range of industries, have trusted Pronto Xi to simplify their most complex challenges.

With headquarters and our Development Centre located in Melbourne, we have support offices and consultants based across Australia, as well as a global network of Resellers and Solution Partners. Specialised business units within Pronto Software have the expertise to assist you with pivotal technology – Digital Transformation with Pronto Woven, Cloud and Hosting services with Pronto Cloud and Business Intelligence solutions with Pronto iQ.

When you choose Pronto Software, you gain a team with deep industry experience, giving us the ability to understand your specific needs and build innovative solutions that drive business growth and revenue.

info@pronto.net
1300 PRONTO (1300 77 66 86)

 pronto.net

 Pronto-Software

 ProntoSoftware